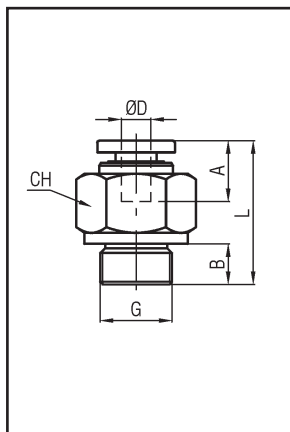


TECHNICAL DATA

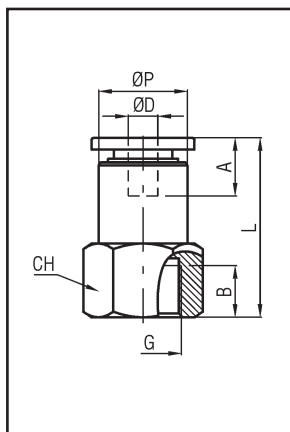
Body material	Acetal resin
Thread	Metric and parallel
Seal	NBR rubber
Clamp	Stainless steel
Size	M5 ÷ G 1/2
Fluid	Air, vacuum
Working temperature	0 ÷ 60 °C
Operating pressure	0 - 10 bar
Negative pressure	-750 mmHg (-1 bar)
Max. pressure	15 bar
Recommended tubes materials	Polyamide and Polyurethane

STRAIGHT MALE



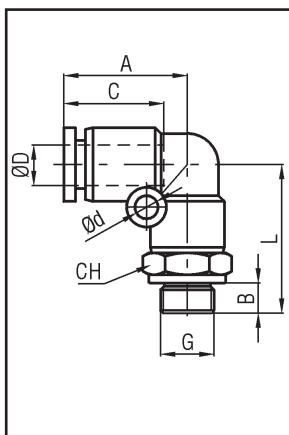
TYPE	L	A	B	ØD	G	CH	q.ty
RT-DM-4/M5	19,3	14	4	4	M5	10	10
RT-DM-6/M5	20,7	15	4	6	M5	12	10
RT-DM-4/01	19,5	14,6	5,5	4	G1/8	14	10
RT-DM-4/02	18,1	14,6	7,5	4	G1/4	17	10
RT-DM-6/01	20,7	15,2	5,5	6	M5	14	10
RT-DM-6/02	22,1	15,2	7,5	6	G1/4	17	10
RT-DM-8/01	25,1	16,2	5,5	8	G1/8	14	10
RT-DM-8/02	23,5	16,2	7,5	8	G1/4	17	10
RT-DM-8/03	21,1	16,2	8,5	8	G3/8	20	10
RT-DM-8/04	25,1	16,2	11	8	G1/2	24	10
RT-DM-10/02	29,3	18,7	7,5	10	G1/4	17	10
RT-DM-10/03	26,8	18,7	8,5	10	G3/8	20	10
RT-DM-10/04	25,1	18,7	11	10	G1/2	24	10
RT-DM-12/03	29,6	21,7	8,5	12	G3/8	21	10
RT-DM-12/04	30,6	21,7	11	12	G1/2	24	10
RT-DM-14/03	37,5	24,5	8,5	16	G3/8	24	10
RT-DM-16/04	40	24,5	11	16	G1/2	24	10

STRAIGHT FEMALE



TYPE	L	A	B	ØD	G	ØP	CH	q.ty
RT-DF-4/01	23,5	14,6	7	4	G1/8	10	14	10
RT-DF-6/01	24,4	15,2	7	6	G1/8	12	14	10
RT-DF-6/02	27,4	15,2	10	6	G1/4	12	17	10
RT-DF-8/01	25,1	16,2	7	8	G1/8	14	14	10
RT-DF-8/02	28,1	16,2	10	8	G1/4	14	17	10
RT-DF-8/03	29,1	16,2	11	8	G3/8	14	21	10
RT-DF-10/02	30,5	18,7	10	10	G1/4	17	17	10
RT-DF-10/03	31,5	18,7	11	10	G3/8	17	21	10
RT-DF-12/03	34,6	21,7	11	12	G3/8	20	21	10
RT-DF-12/04	36,6	21,7	13	12	G1/2	20	24	10

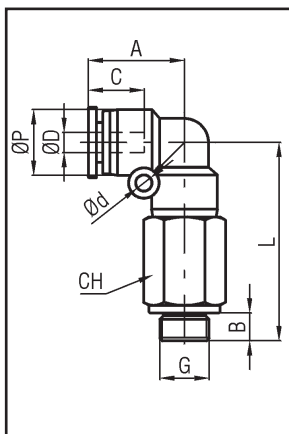
SWIVELLING ELBOW MALE



TYPE	L	A	B	C	Ød	ØD	G	CH	q.ty
RT-G-4/M5	18	16	4	13	-	4	M5	8	10
RT-G-6/M5	18	20	4	16	-	6	M5	8	10
RT-G-4/01	24,5	17,7	5,5	15,1	3,2	4	G1/8	14	10
RT-G-4/02	27	17,7	7,5	15,1	3,2	4	G1/4	17	10
RT-G-6/01	25,7	19,3	5,5	16	3,2	6	G1/8	14	10
RT-G-6/02	28,2	19,3	7,5	16	3,2	6	G1/4	17	10
RT-G-8/01	29	22,8	5,5	18,1	3,2	8	G1/8	14	10
RT-G-8/02	31,5	22,8	7,5	18,1	3,2	8	G1/4	17	10
RT-G-8/03	33	22,8	8,5	18,1	3,2	8	G3/8	20	10
RT-G-8/04	37	22,8	11	18,1	3,2	8	G1/2	24	10
RT-G-10/02	35,8	27,6	7,5	20,4	4,2	10	G1/4	17	10
RT-G-10/03	37,3	27,6	8,5	20,4	4,2	10	G3/8	20	10
RT-G-10/04	41,3	27,6	11	20,4	4,2	10	G1/2	24	10
RT-G-12/03	39	29,6	8,5	23,2	4,2	12	G3/8	21	10
RT-G-12/04	45,5	33	11	24,5	5,1	12	G1/2	24	10
RT-G-16/04	45,5	33	11	24,6	5,1	17	G1/2	24	10

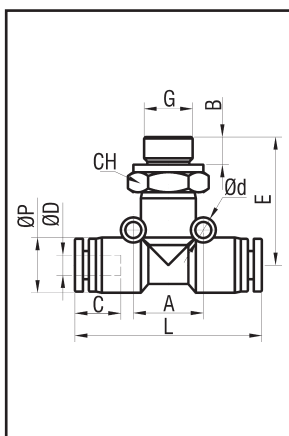
SWIVELLING LONG ELBOW MALE

5



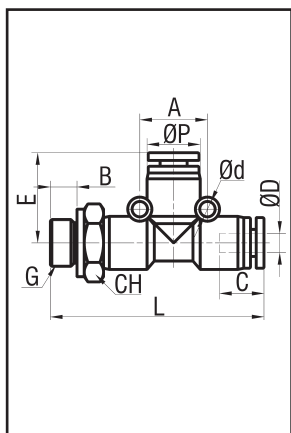
TYPE	L	A	B	C	Ød	ØD	G	ØP	CH	q.ty
RT-GL-4/M5	35	18	4	17	-	4	M5	11	10	10
RT-GL-6/M5	37	20	4	19	6	6	M5	13	12	10
RT-GL-4/01	35,5	17,7	5,5	15,1	3,2	4	G1/8	11	14	10
RT-GL-4/02	39	17,7	7,5	15,1	3,2	4	G1/4	11	17	10
RT-GL-6/01	39,2	19,3	5,5	16	3,2	6	G1/8	13	14	10
RT-GL-6/02	42,2	19,3	7,5	16	3,2	6	G1/4	13	17	10
RT-GL-6/03	43,7	19,3	8,5	16	3,2	6	G3/8	13	20	10
RT-GL-8/01	44,3	22,8	5,5	18,1	3,2	8	G1/8	14,8	14	10
RT-GL-8/02	46,8	22,8	7,5	18,1	3,2	8	G1/4	14,8	17	10
RT-GL-8/03	48,4	22,8	8,5	18,1	3,2	8	G3/8	14,8	20	10
RT-GL-10/02	56,3	27,6	7,5	20,4	4,2	10	G1/4	18,4	17	10
RT-GL-10/03	57,3	27,6	8,5	20,4	4,2	10	G3/8	18,4	20	10
RT-GL-10/04	60,8	27,6	11	20,4	4,2	10	G1/2	18,4	24	10
RT-GL-12/03	62,5	29,6	8,5	23,2	4,2	12	G3/8	21	21	10
RT-GL-12/04	65,5	29,6	11	23,2	4,2	12	G1/2	21	24	10

SWIVELLING CENTRAL TEE



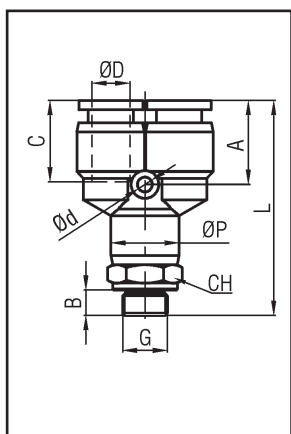
TYPE	L	A	B	C	Ød	ØD	E	G	ØP	CH	q.ty
RT-TC-4/M5	37	15	4	15	5	4	23,5	M5	11	10	10
RT-TC-6/M5	39	16	4	16	6	6	24,5	M5	13	12	10
RT-TC-4/01	37,4	14	5,5	15,1	3,2	4	25,5	G1/8	11	14	10
RT-TC-6/01	39,2	16	5,5	16	3,2	6	26	G1/8	13	14	10
RT-TC-6/02	39,2	16	7,5	16	3,2	6	28,5	G1/4	13	17	10
RT-TC-8/01	45,5	18	5,5	18,1	3,2	8	29	G1/8	14,8	14	10
RT-TC-8/02	45,5	18	7,5	18,1	3,2	8	31,5	G1/4	14,8	17	10
RT-TC-8/03	45,5	18	8,5	18,1	3,2	8	33	G3/8	14,8	20	10
RT-TC-10/02	56,3	24	7,5	20,4	4,2	10	36,5	G1/4	18,4	17	10
RT-TC-10/03	56,3	24	8,5	20,4	4,2	10	38	G3/8	18,4	20	10
RT-TC-10/04	56,3	24	11	20,4	4,2	10	42	G1/2	18,4	24	10
RT-TC-12/03	59,2	27	8,5	23,2	4,2	12	39	G3/8	21	21	10
RT-TC-12/04	59,2	27	11	23,2	4,2	12	43	G1/2	21	24	10

SWIVELLING LATERAL TEE



TYPE	L	A	B	C	E	Ød	ØD	G	ØP	CH	q.ty
RT-TL-4/M5	41	14	4	12	18	5	4	M5	11	10	10
RT-TL-6/M5	42,3	16	4	15	18,5	6	6	M5	13	12	10
RT-TL-4/01	44,2	14	5,5	15,1	18,7	3,2	4	G1/8	11	14	10
RT-TL-6/01	45,6	16	5,5	16	19,6	3,2	6	G1/8	13	14	10
RT-TL-6/02	48,1	16	7,5	16	19,6	3,2	6	G1/4	13	17	10
RT-TL-8/01	51,7	18	5,5	18,1	22,8	3,2	8	G1/8	14,8	14	10
RT-TL-8/02	54,2	18	7,5	18,1	22,8	3,2	8	G1/4	14,8	17	10
RT-TL-8/03	55,7	18	8,5	18,1	22,8	3,2	8	G3/8	14,8	20	10
RT-TL-10/02	64,8	24	7,5	20,4	28,3	4,2	10	G1/4	18,4	17	10
RT-TL-10/03	66,3	24	8,5	20,4	28,3	4,2	10	G3/8	18,4	20	10
RT-TL-10/04	70,3	24	11	20,4	28,3	4,2	10	G1/2	18,4	24	10
RT-TL-12/03	68,6	27	8,5	23,2	29,6	4,2	12	G3/8	21	21	10
RT-TL-12/04	72,6	27	11	23,2	29,6	4,2	12	G1/2	21	24	10

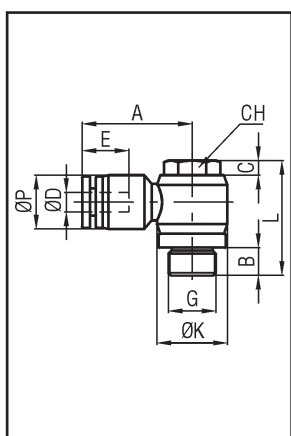
SWIVELLING MALE Y



TYPE	L	A	B	C	Ød	ØD	G	ØP	CH	q.ty
RT-YM-4/M5	40	14	4	14	6	4	M5	11	10	10
RT-YM-6/M5	41	14	4	14	6	6	M5	13	12	10
RT-YM-4/01	35,5	10	5,5	15,1	3,2	4	G1/8	11	14	10
RT-YM-6/01	39,2	10,5	5,5	16	3,2	6	G1/8	13	14	10
RT-YM-6/02	42,2	10,5	7,5	16	3,2	6	G1/4	13	17	10
RT-YM-8/01	44,3	13,4	5,5	18,1	3,2	8	G1/8	14,8	14	10
RT-YM-8/02	46,8	13,4	7,5	18,1	3,2	8	G1/4	14,8	17	10
RT-YM-8/03	48,4	13,4	8,5	18,1	3,2	8	G3/8	14,8	20	10
RT-YM-10/02	56,3	15,5	7,5	20,4	4,2	10	G1/4	18,4	17	10
RT-YM-10/03	57,3	15,5	8,5	20,4	4,2	10	G3/8	18,4	20	10
RT-YM-10/04	60,8	15,5	11	20,4	4,2	10	G1/2	18,4	24	10
RT-YM-12/03	62,5	15,5	8,5	23,2	4,2	12	G3/8	21	21	10
RT-YM-12/04	65,5	15,5	11	23,2	4,2	12	G1/2	21	24	10

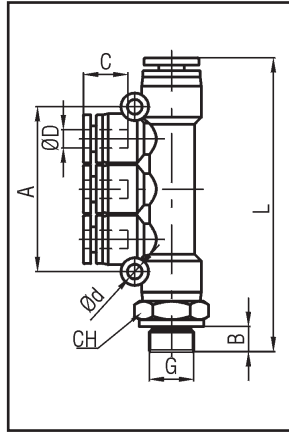
5

SWIVELLING LOW ELBOW



TYPE	L	A	B	C	ØD	E	G	ØK	ØP	CH	q.ty
RT-GG-4/M5	17	22,5	4	3	4	12	M5	10	11	8	10
RT-GG-6/M5	17	23,4	4	3	6	17	M5	10	13	8	10
RT-GG-4/01	23,5	22,5	5,7	3	4	15,1	G1/8	14,4	11	14	10
RT-GG-6/01	23,5	23,4	5,7	3	6	16	G1/8	14,4	13	14	10
RT-GG-6/02	27	25,5	8,3	4	6	16	G1/4	18,3	13	17	10
RT-GG-8/01	23,5	25,6	5,7	3	8	18,1	G1/8	14,4	14,8	14	10
RT-GG-8/02	27	28,7	8,3	4	8	18,1	G1/4	18,3	14,8	17	10
RT-GG-8/03	32,7	29,6	13,9	4,5	8	18,1	G3/8	22	14,8	21	10
RT-GG-10/02	27	33,1	8,3	4	10	20,4	G1/4	18,3	18,4	17	10
RT-GG-10/03	32,7	32,9	13,9	4,5	10	20,4	G3/8	22	18,4	21	10
RT-GG-10/04	38,1	35,9	11	5,5	10	20,4	G1/2	28	18,4	24	10
RT-GG-12/03	32,7	35,6	13,9	4,5	12	23,2	G3/8	22	21	21	10
RT-GG-12/04	38,1	36,6	11	5,5	12	23,2	G1/2	28	21	24	10

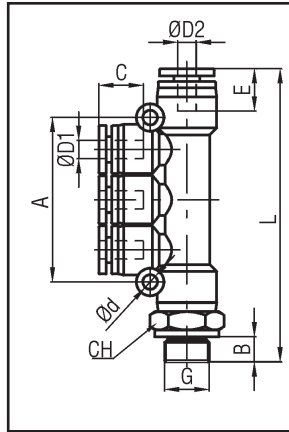
SWIVELLING LATERAL MULTI-TEE



TYPE	L	A	B	C	Ød	ØD	G	CH	q.ty
RT-MTL-4/01	64,2	36	5,5	15,1	3,2	4	G1/8	14	10
RT-MTL-4/02	66,7	36	7,5	15,1	3,2	4	G1/4	17	10
RT-MTL-6/01	68,6	42	5,5	16	3,2	6	G1/8	14	10
RT-MTL-6/02	71,1	42	7,5	16	3,2	6	G1/4	17	10
RT-MTL-6/03	72,6	42	8,5	16	3,2	6	G3/8	20	10
RT-MTL-8/01	87,8	48	5,5	18,1	3,2	8	G1/8	14	10
RT-MTL-8/02	90,3	48	7,5	18,1	3,2	8	G1/4	17	10
RT-MTL-8/03	91,8	48	8,5	18,1	3,2	8	G3/8	20	10

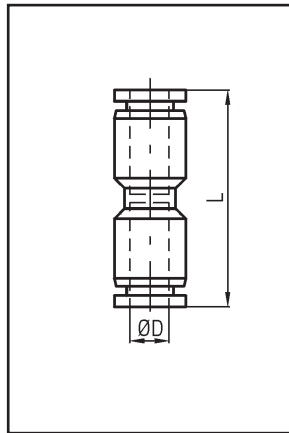
SWIVELLING DIFFERENT Ø LATERAL MULTI-TEE

5



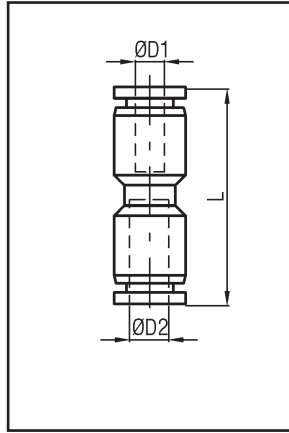
TYPE	L	A	B	C	Ød	ØD1	ØD2	E	G	CH	q.ty
RT-MDL6/4/01	64,2	36	5,5	16	3,2	4	6	15,1	G1/8	14	10
RT-MDL8/4/02	70,7	42	7,5	18,1	3,2	4	8	15,1	G1/4	17	10
RT-MDL8/6/02	71,1	42	7,5	18,1	3,2	6	8	16	G1/4	17	10
RT-MDL10/8/03	91,8	48	8,5	20,4	3,2	8	10	18,1	G3/8	20	10

UNION STRAIGHT



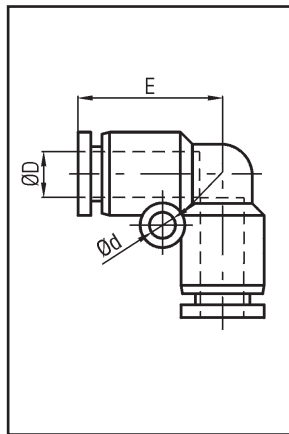
TYPE	L	ØD	q.ty
RT-DI-4	33	4	10
RT-DI-6	35,2	6	10
RT-DI-8	39,1	8	10
RT-DI-10	47,8	10	10
RT-DI-12	49,2	12	10
RT-DI-16	51	16	10

REDUCED UNION STRAIGHT



TYPE	L	ØD1	ØD2	q.ty
RT-DIR-6/4	34,9	6	4	10
RT-DIR-8/6	38,6	8	6	10
RT-DIR-10/8	47,3	10	8	10
RT-DIR-12/10	48,9	12	10	10
RT-DIR-16/12	51	16	12	10

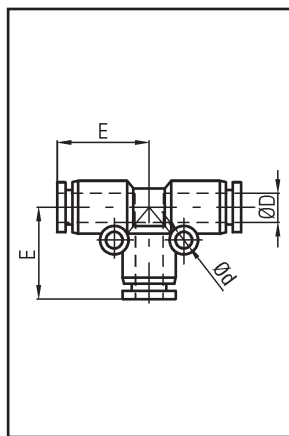
UNION ELBOW



TYPE	ØD	Ød	E	q.ty
RT-GI-4	4	-	17,5	10
RT-GI-6	6	3,2	19	10
RT-GI-8	8	3,2	22,8	10
RT-GI-10	10	4,2	27,6	10
RT-GI-12	12	4,3	29,6	10
RT-GI-16	16	5,1	33	10

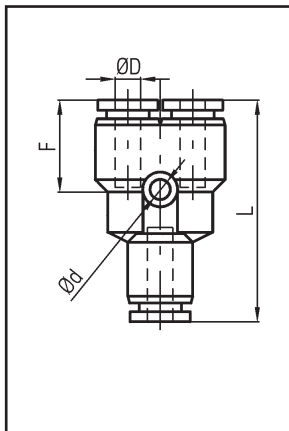
5

UNION TEE



TYPE	ØD	Ød	E	q.ty
RT-TI-4	4	3,2	18,5	10
RT-TI-6	6	3,2	19,3	10
RT-TI-8	8	3,2	22,75	10
RT-TI-10	10	4,2	28,3	10
RT-TI-12	12	4,3	29,6	10

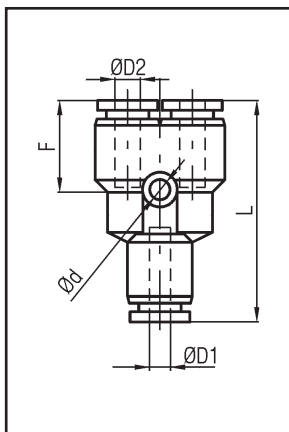
UNION Y



TYPE	L	Ød	ØD	F	q.ty
RT-YI-4	35,5	3,2	4	14	10
RT-YI-6	37,1	3,2	6	14,8	10
RT-YI-8	40,4	3,2	8	18,2	10
RT-YI-10	49,7	4,2	10	20,8	10
RT-YI-12	53,2	4,2	12	21,6	10

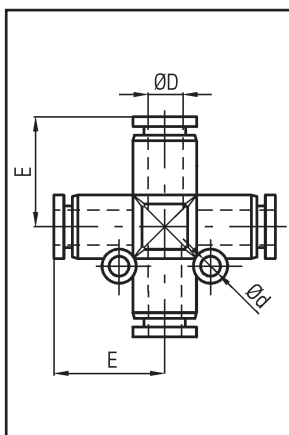
REDUCED UNION Y

5



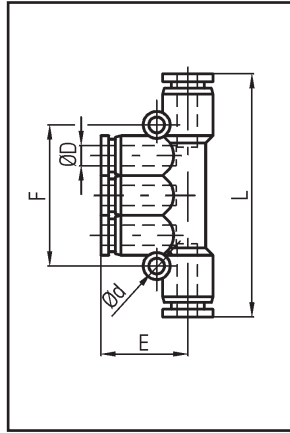
TYPE	L	Ød	ØD1	ØD2	F	q.ty
RT-YIR-6/4	36,8	3,2	6	4	14,5	10
RT-YIR-8/6	39,9	3,2	8	6	17,7	10
RT-YIR-10/8	49,2	4,2	10	8	20,3	10
RT-YIR-12/10	52,9	4,2	12	10	21,3	10
RT-YIR-16/12	62	5,1	16	12	24,5	10

CROSS JUNCTION



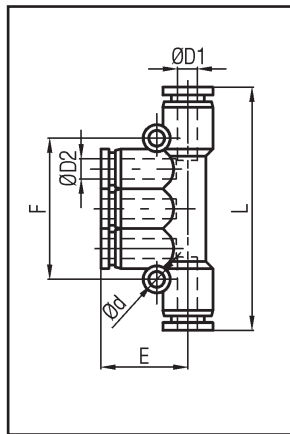
TYPE	ØD	Ød	E	q.ty
RT-C-4	4	3,2	17,5	10
RT-C-6	6	3,2	19,3	10
RT-C-8	8	3,2	22,75	10
RT-C-10	10	4,2	28,3	10
RT-C-12	12	4,3	29,6	10

MULTI-TEE



TYPE	L	Ød	ØD1	E	F	q.ty
RT-MT-4	57	3,2	4	19	36	10
RT-MT-6	61	3,2	6	20,3	42	10
RT-MT-8	81,6	3,2	8	24,3	48	10

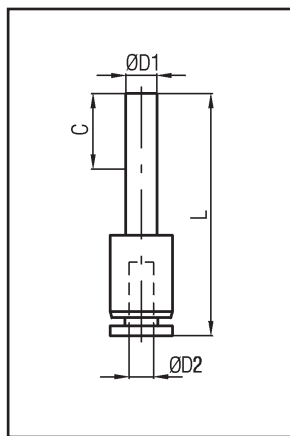
DIFFERENT Ø MULTI-TEE



TYPE	L	Ød	ØD1	ØD2	E	F	q.ty
RT-MTD-6/4	57,6	3,2	6	4	19	36	10
RT-MTD-8/4	62,6	3,2	8	4	20	42	10
RT-MTD-8/6	62,6	3,2	8	6	20,3	42	10
RT-MTD-10/6	77,3	3,2	10	6	23,8	48	10
RT-MTD-10/8	77,3	3,2	10	8	24,3	48	10

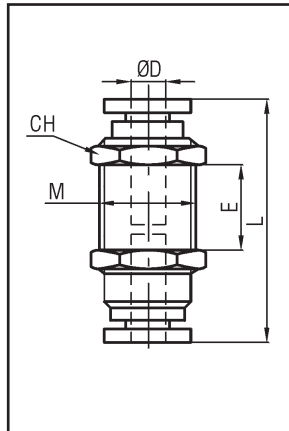
5

REDUCER



TYPE	L	C	ØD1	ØD2	q.ty
RT-RC-6/4	42	17	6	4	10
RT-RC-8/4	44,5	18	8	4	10
RT-RC-8/6	45	18	8	6	10
RT-RC-10/6	47	20	10	6	10
RT-RC-10/8	47	20	10	8	10
RT-RC-12/8	54	23,5	12	8	10
RT-RC-12/10	54,5	23,5	12	10	10

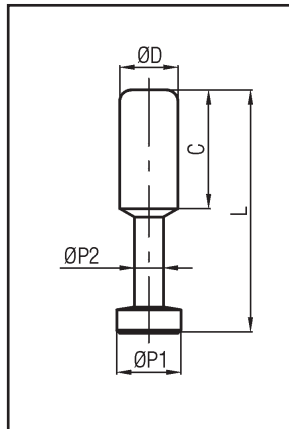
BULKHEAD CONNECTOR



TYPE	L	ØD	E	M	CH	q.ty
RT-P-4	30,1	4	9,7	M12	14	10
RT-P-6	31,8	6	7,5	M14	17	10
RT-P-8	35,3	8	6,8	M16	19	10
RT-P-10	41,6	10	11,5	M20	24	10
RT-P-12	45,3	12	12,8	M22	27	10

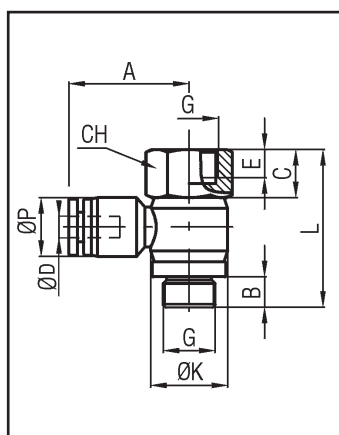
MALE PLUG

5



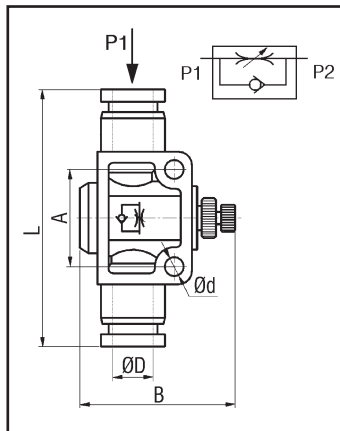
TYPE	L	C	ØD	ØP1	ØP2	q.ty
RT-TM-4	28	15	4	5	3	10
RT-TM-6	33	17	6	7	3	10
RT-TM-8	37	18	8	9	4	10
RT-TM-10	42	20,5	10	11	5	10
RT-TM-12	44	23	12	13	6	10

SWIVELLING MALE/FEMALE ELBOW



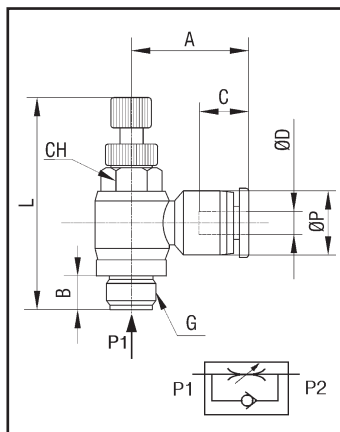
TYPE	L	A	B	C	ØD	E	G	ØK	ØP	CH	q.ty
RT-GMF-4/01	29,5	22,5	5,7	9	4	7	G1/8	14,4	11	14	10
RT-GMF-4/02	35	23,6	8,3	12	4	10	G1/4	18,3	11	17	10
RT-GMF-6/01	29,5	23,4	5,7	9	6	7	G1/8	14,4	13	14	10
RT-GMF-6/02	35	25,5	8,3	12	6	10	G1/4	18,3	11	17	10
RT-GMF-8/01	29,5	25,6	5,7	9	8	7	G1/8	14,4	14,8	14	10
RT-GMF-8/02	35	28,7	8,3	12	8	10	G1/4	18,3	14,8	17	10
RT-GMF-8/03	41,2	29,6	13,9	13	8	11	G3/8	22	14,8	21	10
RT-GMF-8/04	47	32,6	11	14,4	8	13	G1/2	28	14,8	24	10
RT-GMF-10/02	35	33,1	8,3	12	10	10	G1/4	18,3	18,4	17	10
RT-GMF-10/03	41,2	32,9	13,9	13	10	11	G3/8	22	18,4	21	10
RT-GMF-10/04	47	35,9	11	14,4	10	13	G1/2	28	18,4	24	10
RT-GMF-12/02	35	33,5	8,3	12	12	10	G1/4	18,3	21	21	10
RT-GMF-12/03	41,2	35,6	13,9	13	12	11	G3/8	22	21	21	10
RT-GMF-12/04	47	36,6	11	14,4	12	13	G1/2	28	21	24	10

INLINE UNIDIRECTIONAL FLOW REGULATOR



TYPE	L	A	B	Ød	ØD	q.ty
RT-RFL-4	39,5	14	25,7	3,2	4	10
RT-RFL-6	47,6	20	41,9	4,3	6	10
RT-RFL-8	52,6	22	45,6	4,3	8	10
RT-RFL-10	63,1	26	52,3	4,3	10	10
RT-RFL-12	74,2	32	55	4,3	12	10

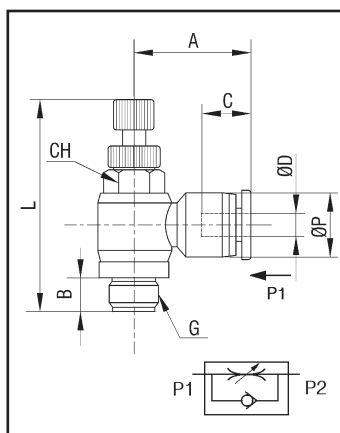
UNIDIRECTIONAL FLOW REGULATOR FOR CYLINDER (OUT)



TYPE	L	A	B	C	ØD	G	ØP	CH	q.ty
RT-RF-4/M5	28,2	21	5	12	4	M5	11	8	10
RT-RF-6/M5	28,2	21	-	-	6	M5	13	8	10
RT-RF-4/01	41,1	22,5	5,7	15,1	4	G1/8	10	10	10
RT-RF-4/02	48,8	24,3	8,3	15,1	4	G1/4	10	14	10
RT-RF-6/01	41,1	23,4	5,7	16	6	G1/8	12	10	10
RT-RF-6/02	48,8	25,5	8,3	16	6	G1/4	12	14	10
RT-RF-8/01	41,1	25,6	5,7	18,1	8	G1/8	14	10	10
RT-RF-8/02	48,8	28,7	8,3	18,1	8	G1/4	14	14	10
RT-RF-8/03	54,5	29,6	13,9	18,1	8	G3/8	14	19	10
RT-RF-10/02	48,8	32,3	8,3	20,4	10	G1/4	17	14	10
RT-RF-10/03	54,5	32,9	13,9	20,4	10	G3/8	17	19	10
RT-RF-10/04	60	35,9	11	20,4	10	G1/2	17	19	10
RT-RF-12/03	54,5	35,6	13,9	23,2	12	G3/8	20	19	10
RT-RF-12/04	60	36,6	11	23,2	12	G1/2	20	24	10

5

UNIDIRECTIONAL FLOW REGULATOR FOR VALVE (IN)

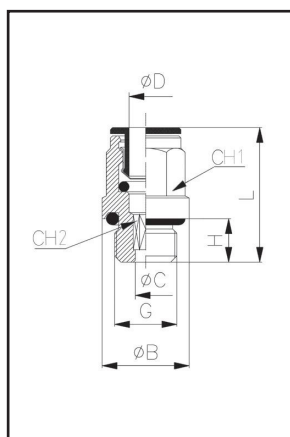


TYPE	L	A	B	C	ØD	G	ØP	CH	q.ty
RT-RFV-4/M5	28,2	21	5	12	4	M5	10	8	10
RT-RFV-6/M5	28,2	21	5	16	6	M5	13	8	10
RT-RFV-4/01	41,1	22,5	5,7	15,1	4	G1/8	10	10	10
RT-RFV-4/02	48,8	24,3	8,3	15,1	4	G1/4	10	14	10
RT-RFV-6/01	41,1	23,4	5,7	16	6	G1/8	12	10	10
RT-RFV-6/02	48,8	25,5	8,3	16	6	G1/4	12	14	10
RT-RFV-8/01	41,1	25,6	5,7	18,1	8	G1/8	14	10	10
RT-RFV-8/02	48,8	28,7	8,3	18,1	8	G1/4	14	14	10
RT-RFV-8/03	54,5	29,6	13,9	18,1	8	G3/8	14	19	10
RT-RFV-10/02	48,8	32,3	8,3	20,4	10	G1/4	17	14	10
RT-RFV-10/03	54,5	32,9	13,9	20,4	10	G3/8	17	19	10
RT-RFV-10/04	60	35,9	11	20,4	10	G1/2	17	19	10
RT-RFV-12/03	54,5	35,6	13,9	23,2	12	G3/8	20	19	10
RT-RFV-12/04	60	36,6	11	23,2	12	G1/2	20	24	10

TECHNICAL DATA

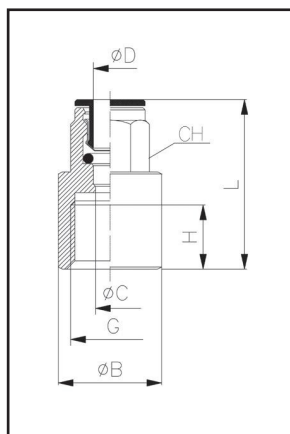
Material	Body and thrust ring: nickel plated brass					
Thread	Metric, taper and parallel					
Seal	NBR rubber					
Clamp	Stainless steel AISI 316					
Size	M5 ÷ G1/2					
Fluid	Air, water, oil, steam					
Working temperature	-20 ÷ +70 °C					
Max. pressure	16 bar					
Permissible tolerances for tubes	Polyamide PA11 - PA12			Polyurethane PU		
	Outside tube diameter	Outside tube diameter tolerance		Outside tube diameter	Outside tube diameter tolerance	
	4 - 8 mm	+0,1	-0,1	4 - 8 mm	+0,1	-0,1
	10 - 22 mm	+0,15	-0,15	10 - 14 mm	+0,15	-0,1

PARALLEL STRAIGHT MALE



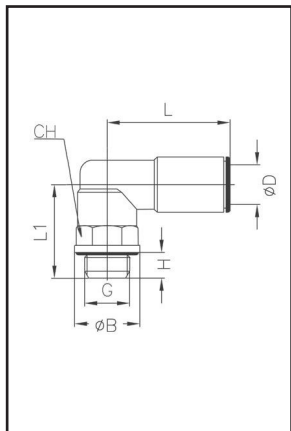
TYPE	L	ØB	ØC	ØD	G	H	CH1	CH2	q.ty
RO-DM - 4/M5	20,5	9	2,6	4	M5	4	-	2,5	50
RO-DM - 4/M6	20,5	9	2,6	4	M6	5	-	2,5	50
RO-DM - 4/M7	22,2	10,5	3,6	4	M7	6	9	3,5	50
RO-DM - 4/M8	23,5	12	2,6	4	M8	7	10	2,5	50
RO-DM - 4/01	20	13,5	2,6	4	G1/8	6	9	2,5	50
RO-DM - 4/02	21	17	2,6	4	G1/4	8	9	2,5	50
RO-DM - 6/M5	22,5	10,5	2,6	6	M5	4	-	2,5	50
RO-DM - 6/M6	21,5	11	2,5	6	M6	4	-	2,5	50
RO-DM - 6/M7	24	10,5	3,6	6	M7	6	-	3,5	50
RO-DM - 6/M12	24	16	4,2	6	M12X1,25	8	11	4	50
RO-DM - 6/M12A	24	16	4,2	6	M12X1,5	8	11	4	50
RO-DM - 6/01	24	13,5	4,2	6	G1/8	6	11	4	50
RO-DM - 6/02	24	17	4,2	6	G1/4	8	11	4	50
RO-DM - 6/03	24	20	4,2	6	G3/8	9	13	4	50
RO-DM - 8/01	26,5	13	5,2	8	G1/8	6	13	5	50
RO-DM - 8/02	25	17	6,2	8	G1/4	8	13	6	50
RO-DM - 8/03	25	20	6,2	8	G3/8	9	13	6	50
RO-DM - 8/04	31	23	6,2	8	G1/2	11	13	6	25
RO-DM - 10/01	28	13,5	5,2	10	G1/8	6	16	5	50
RO-DM - 10/02	29,5	16	7,3	10	G1/4	8	16	7	50
RO-DM - 10/03	29,5	21	8,3	10	G3/8	9	16	8	50
RO-DM - 10/04	30	24	8,3	10	G1/2	11	16	8	25
RO-DM - 12/02	31,5	16	7,3	12	G1/4	8	18	7	50
RO-DM - 12/03	31	21	10,3	12	G3/8	9	18	10	25
RO-DM - 12/04	31	24	10,3	12	G1/2	11	18	10	25
RO-DM - 14/03	34	21	10,3	14	G3/8	9	21	10	25
RO-DM - 14/04	34	25	12	14	G1/2	11	21	12	25

PARALLEL STRAIGHT FEMALE



TYPE	L	ØB	ØC	ØD	G	H	CH	q.ty
RO-DF-4/M5	21,5	9	3	4	M5	5	9	50
RO-DF-4/01	26,5	12	3	4	G1/8	6,5	9	50
RO-DF-4/02	29,5	17	3	4	G1/4	10	9	50
RO-DF-6/01	27	12	5	6	G1/8	6,5	11	50
RO-DF-6/02	31	17	5	6	G1/4	10	11	50
RO-DF-8/01	28	12	7	8	G1/8	6,5	13	50
RO-DF-8/02	32	17	7	8	G1/4	10	13	50
RO-DF-10/02	32	16	9	10	G1/4	10	16	50
RO-DF-10/03	38	20	9	10	G3/8	13	20	25

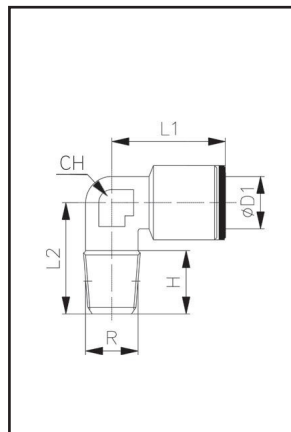
PARALLEL SWIVEL MALE ELBOW



TYPE	L	L1	ØB	ØD	G	H	CH	q.ty
RO-GM-4/M5	17,5	20	8	4	M5	4	8	50
RO-GM-4/M6	-	-	-	4	M6	-	-	50
RO-GM-4/M7	21,5	18	10,5	4	M7	6	11	50
RO-GM-4/Ø1	17,5	18,5	12,8	4	G1/8	5,8	13	50
RO-GM-4/Ø2	19	22,5	12,8	4	G1/8	8	16	50
RO-GM-6/M5	21	14,5	8	6	M5	4	9	50
RO-GM-6/M6	19,5	15,5	9	6	M6	5	9	50
RO-GM-6/M7	19,5	16,5	10	6	M7	6	9	50
RO-GM-6/M12	19	25	16	6	M12x1,25	8	13	50
RO-GM-6/M12A	19	25	16	6	M12x1,50	8	13	50
RO-GM-6/Ø1	21	20	13	6	G1/8	6	13	50
RO-GM-6/Ø2	21	24	16	6	G1/4	8	13	50
RO-GM-6/Ø3	21	25,5	20	6	G3/8	9	13	25
RO-GM-8/Ø1	24	20	13	8	G1/8	6	13	50
RO-GM-8/Ø2	24	24	16	8	G1/4	8	13	50
RO-GM-8/Ø3	24	25,5	20	8	G3/8	9	13	50
RO-GM-10/Ø2	27	24	16	10	G1/4	8	16	50
RO-GM-10/Ø3	27	28	20	10	G3/8	9	16	50
RO-GM-10/Ø4	27	30	25	10	G1/2	11	16	25
RO-GM-12/Ø2	28	27,5	16	12	G1/4	8	16	50
RO-GM-12/Ø3	28	28,5	20	12	G3/8	9	20	25
RO-GM-12/Ø4	28	33,5	25	12	G1/2	11	20	25
RO-GM-14/Ø3	31	28,5	20	14	G3/8	9	20	25
RO-GM-14/Ø4	31	30,5	25	14	G1/2	11	21	25

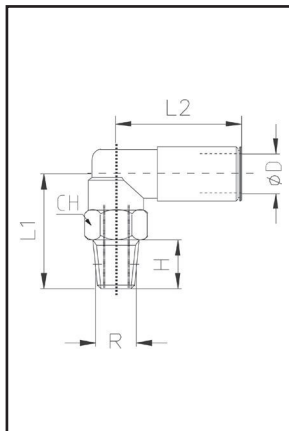
5

TAPER FIXED MALE ELBOW



TYPE	L1	L2	ØD1	H	R	CH	q.ty
RO1-GM-4/Ø1	18	16,5	4	8	1/8	10	50
RO1-GM-5/Ø1	18	16,5	5	9	1/8	10	50
RO1-GM-6/Ø1	22	22,5	6	8	1/8	10	50
RO1-GM-6/Ø2	23	18,5	6	11,5	1/4	12	25
RO1-GM-8/Ø1	24	22,5	8	9	1/8	11	25
RO1-GM-8/Ø2	24	22,5	8	11,5	1/4	12	25
RO1-GM-10/Ø2	24	22,5	10	11,5	1/4	14	25

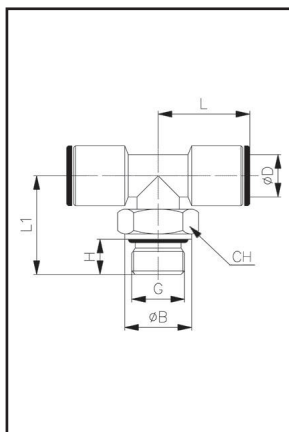
TAPER SWIVEL MALE ELBOW



TYPE	L1	L2	ØD	H	R	CH	q.ty
RO1-GMG-4/01	20,2	19	4	7	R1/8	13	50
RO1-GMG-4/02	25	19	4	11	R1/4	14	50
RO1-GMG-6/01	20,2	21	6	7	R1/8	13	50
RO1-GMG-6/02	25	21	6	11	R1/4	14	50
RO1-GMG-8/01	20,2	24	8	7	R1/8	13	50
RO1-GMG-8/02	25	24	8	11	R1/4	14	50
RO1-GMG-8/03	28	24	8	11	R3/8	18	50
RO1-GMG-10/02	26	27	10	11	R1/4	16	50
RO1-GMG-10/03	30	27	10	11	R3/8	16	50
RO1-GMG-12/03	32,5	28	12	11	R3/8	20	50
RO1-GMG-12/04	35,5	28	12	14	R1/2	22	25
RO1-GMG-14/03	32,5	31	14	11	R3/8	20	25
RO1-GMG-14/04	35,5	31	14	14	R1/2	22	25

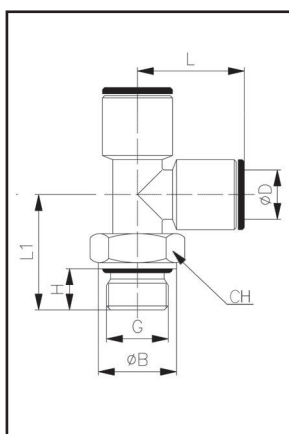
PARALLEL SWIVELLING CENTRAL MALE TEE

5



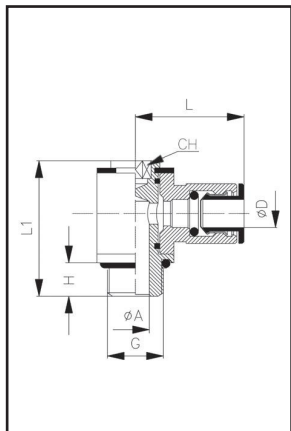
TYPE	L	L1	ØB	ØD	G	H	CH	q.ty
RO-TC-4/M5	17,5	16,5	8	4	M5	4	9	50
RO-TC-4/01	17,5	20	13	4	G1/8	6	13	50
RO-TC-4/02	19	24	16	4	G1/4	8	13	50
RO-TC-6/01	21	20	13	6	G1/8	6	13	50
RO-TC-6/02	21	24	16	6	G1/4	8	13	50
RO-TC-8/01	23	20	13	8	G1/8	6	13	50
RO-TC-8/02	23	24	16	8	G1/4	8	13	50
RO-TC-8/03	25,5	25,5	20	8	G3/8	9	13	50
RO-TC-10/02	25,5	28	16	10	G1/4	8	16	50
RO-TC-10/03	25,5	29	12	10	G3/8	9	16	50
RO-TC-12/02	27	30,5	16	12	G1/4	8	16	50
RO-TC-12/03	27	28,5	20	12	G3/8	9	20	25
RO-TC-14/04	31	33,5	25	14	G1/2	11	20	25

PARALLEL SWIVELLING LATERAL MALE TEE



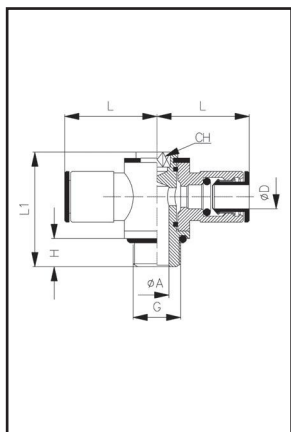
TYPE	L	L1	ØB	ØD	G	H	CH	q.ty
RO-TL-4/M5	17,5	16,5	8	4	M5	4	9	50
RO-TL-4/01	17,5	20	13	4	G1/8	6	13	50
RO-TL-4/02	19	24	13	4	G1/4	8	13	50
RO-TL-6/01	19,5	20	13	6	G1/8	6	13	50
RO-TL-6/02	21	24	16	6	G1/4	8	13	50
RO-TL-8/01	23	20	13	8	G1/8	6	13	50
RO-TL-8/02	23	24	16	8	G1/4	8	13	50
RO-TL-8/03	25,5	25,5	20	8	G3/8	9	13	50
RO-TL-10/02	25,5	24	16	10	G1/4	8	16	50
RO-TL-10/03	25,5	28	20	10	G3/8	9	16	50
RO-TL-12/02	27	30,5	16	12	G1/4	8	16	50
RO-TL-12/03	21	28,5	20	12	G3/8	9	20	25
RO-TL-14/04	31	33,5	25	14	G1/2	11	20	25

COMPLETE PARALLEL SINGLE BANJO, ROTATING 360°



TYPE	L	L1	ØA	ØD	G	H	CH	q.ty
RO-BSR-4/M5	18,5	17	2	4	M5	4	2	50
RO-BSR-4/01	21	25	5,5	4	G1/8	6	3	50
RO-BSR-6/01	23,5	25	5,5	6	G1/8	6	3	50
RO-BSR-8/01	24,5	25	5,5	8	G1/8	6	3	50
RO-BSR-6/02	24,5	29,3	7,8	6	G1/4	8	4	50
RO-BSR-8/02	26	29,3	7,8	8	G1/4	8	4	25
RO-BSR-10/02	27	29,3	7,8	10	G1/4	8	4	25
RO-BSR-8/03	29	34	10	8	G3/8	9	5	25
RO-BSR-10/03	29	34	10	10	G3/8	9	5	25
RO-BSR-12/02	29,3	28	7,8	12	G1/4	8	4	25
RO-BSR-12/03	29	34	10	12	G3/8	9	5	25

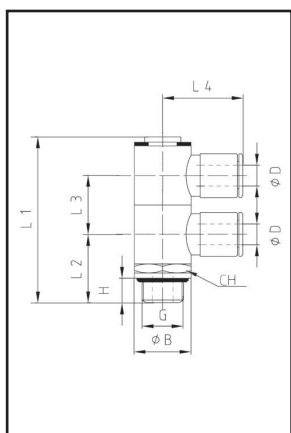
COMPLETE PARALLEL DOUBLE BANJO, ROTATING 360°



TYPE	L	L1	ØA	ØD	G	H	CH	q.ty
RO-BDR-4/M5	18,5	17	2	4	M5	4	2	50
RO-BDR-4/01	21	25	5,5	4	G1/8	6	3	50
RO-BDR-5/M5	19,5	17	2	5	M5	4	2	50
RO-BDR-5/01	22,5	25	5,5	5	G1/8	6	3	50
RO-BDR-6/01	23	25	5,5	6	G1/8	6	3	50
RO-BDR-8/01	24	25	5,5	8	G1/8	6	3	50
RO-BDR-6/02	24	29,3	7,8	6	G1/4	8	4	50
RO-BDR-8/02	26	29,3	7,8	8	G1/4	8	4	50
RO-BDR-10/02	27	29,3	7,8	10	G1/4	8	4	25
RO-BDR-8/03	28	34	10	8	10	9	5	25
RO-BDR-10/03	29	34	10	10	10	9	5	25
RO-BDR-12/03	30	34	10	12	10	9	5	25

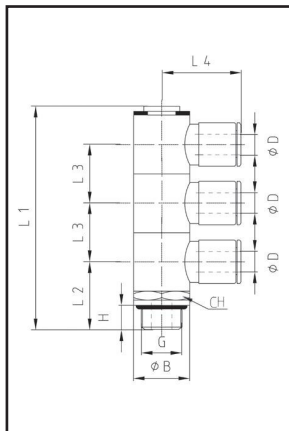
5

COMPLETE PARALLEL TWO SINGLE BANJO, ROTATING 360°



TYPE	L1	L2	L3	L4	ØB	ØD	G	H	CH	q.ty
RO-2BSR-4/01	44	19	15	21	13	4	G1/8	6	14	25
RO-2BSR-6/01	44	19	15	23	13	6	G1/8	6	14	25
RO-2BSR-8/01	44	19	15	24	13	8	G1/8	6	14	25
RO-2BSR-6/02	50	22,5	17	24	17	6	G1/4	8	17	25
RO-2BSR-8/02	50	22,5	17	26	17	8	G1/4	8	17	10
RO-2BSR-10/02	50	22,5	17	27	17	10	G1/4	8	17	10
RO-2BSR-12/02	50	22,5	17	28	17	12	G1/4	8	17	10

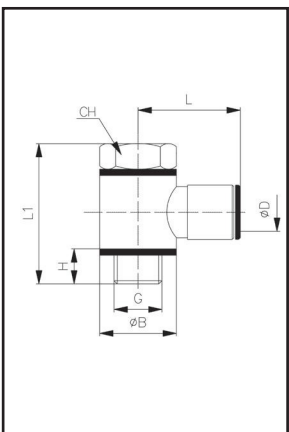
COMPLETE PARALLEL THREE SINGLE BANJO, ROTATING 360°



TYPE	L1	L2	L3	L4	ØB	ØD	G	H	CH	q.ty
RO-3BSR-4/01	59	19	15	21	13	4	G1/8	6	14	25
RO-3BSR-6/01	59	19	15	23	13	6	G1/8	6	14	25
RO-3BSR-8/01	59	19	15	24	13	8	G1/8	6	14	25
RO-3BSR-6/02	67	21,5	17	24	17	6	G1/4	8	17	25
RO-3BSR-8/02	67	21,5	17	26	17	8	G1/4	8	17	10
RO-3BSR-10/02	67	21,5	17	27	17	10	G1/4	8	17	10
RO-3BSR-12/02	67	21,5	17	28	17	12	G1/4	8	17	10

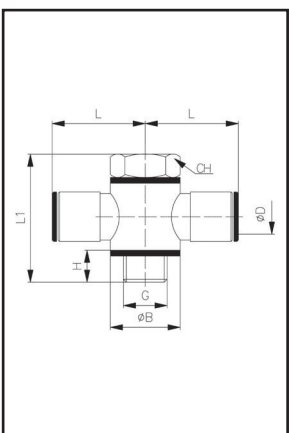
COMPLETE PARALLEL SINGLE SWIVEL BANJO

5



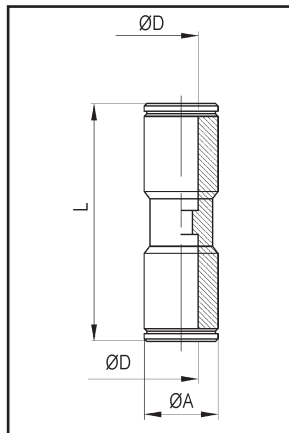
TYPE	L	L1	ØB	ØD	G	H	CH	q.ty
RO-BS-4/M5	18,5	17,5	7	4	M5	4,5	8	50
RO-BS-4/M6	21	18	14	4	M6	4,5	9	50
RO-BS-4/01	21	28	14	4	G1/8	7,5	14	50
RO-BS-6/M5	19	17,5	10	6	M5	4,5	8	50
RO-BS-6/01	22,5	28	14	6	G1/8	7,5	14	50
RO-BS-6/02	24	33	18	6	G1/4	9	17	50
RO-BS-8/01	24,5	28	14	8	G1/8	7,5	14	25
RO-BS-8/02	26	33	18	8	G1/4	9	17	25
RO-BS-8/03	28	37	21	8	G3/8	10	22	25
RO-BS-10/02	27	33	18	10	G1/4	9	17	25
RO-BS-10/03	29	37	21	10	G3/8	10	22	25
RO-BS-12/02	28	33	18	12	G1/4	9	17	25
RO-BS-12/03	30	37	21	12	G3/8	10	22	10

COMPLETE PARALLEL DOUBLE SWIVEL BANJO



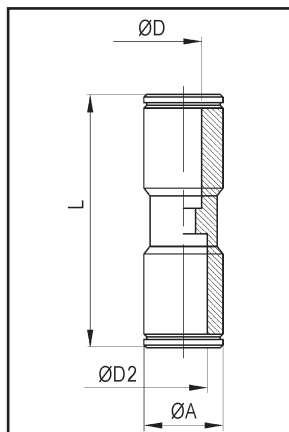
TYPE	L	L1	ØB	ØD	G	H	CH	q.ty
RO-BD-4/M5	18,5	17,5	7	4	M5	4,5	8	50
RO-BD-4/01	21	28	14	4	G1/8	7,5	14	50
RO-BD-6/01	22,5	28	14	6	G1/8	7,5	14	50
RO-BD-6/02	24	33	18	6	G1/4	9	17	50
RO-BD-8/01	24,5	28	14	8	G1/8	7,5	14	25
RO-BD-8/02	26	33	18	8	G1/4	9	17	25
RO-BD-8/03	28	37	21	8	G3/8	10	22	25
RO-BD-10/02	27	33	18	10	G1/4	9	17	25
RO-BD-10/03	29	37	21	10	G3/8	9	22	25
RO-BD-12/03	30	37	21	12	G3/8	9	22	10

UNION STRAIGHT



TYPE	L	ØA	ØD	q.ty
RO-DI-4	30	9	4	50
RO-DI-6	31,5	11	6	50
RO-DI-8	36	13	8	50
RO-DI-10	37	15	10	50
RO-DI-12	40,5	17	12	50
RO-DI-14	45	20	14	50

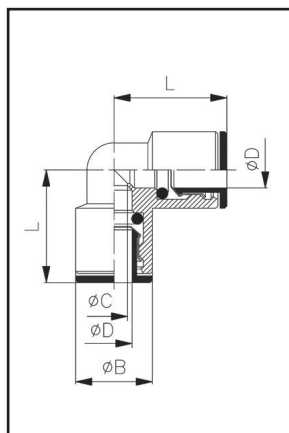
REDUCED UNION STRAIGHT



TYPE	L	ØA	ØD	ØD2	q.ty
RO-DIR-6/4	33,5	11	4	6	50
RO-DIR-8/6	37	13	6	8	50
RO-DIR-10/8	39,5	16	8	10	50
RO-DIR-12/10	40	20	10	12	50
RO-DIR-14/12	43	22	12	14	50

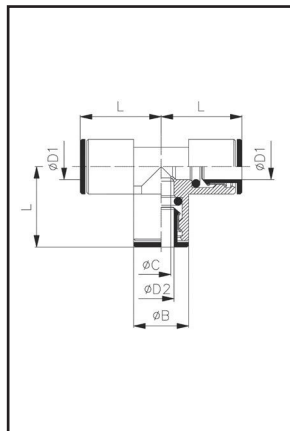
5

UNION ELBOW



TYPE	L	ØB	ØC	ØD	q.ty
RO-GI-4	17,5	9	3	4	50
RO-GI-6	19,5	11	5	6	50
RO-GI-8	23	13	7	8	50
RO-GI-10	25	15	8	10	50
RO-GI-12	27	17	10	12	25
RO-GI-14	30	20	12	14	25

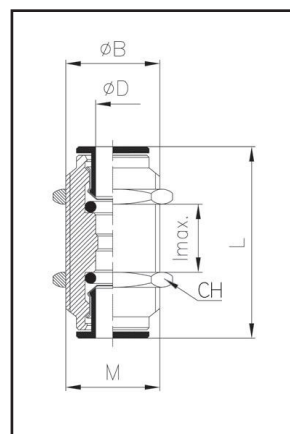
UNION TEE



TYPE	L	ØB	ØC	ØD1	ØD2	q.ty
RO-TI-4	17,5	9	3	4	4	50
RO-TI-6	19,5	11	5	6	6	50
RO-TI-6/4	19,5	11	3	6	4	50
RO-TI-8	23	13	7	8	8	50
RO-TI-8/6	23	13	5	8	6	50
RO-TI-10	25	15	8	10	10	20
RO-TI-10/8	25	15	7	10	8	20
RO-TI-12	27	17	10	12	12	20
RO-TI-14	30	20	12	14	14	20

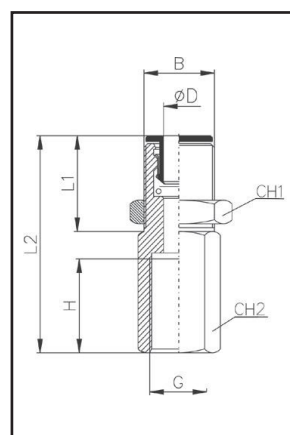
BULKHEAD CONNECTOR

5



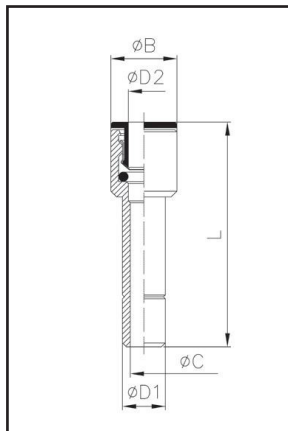
TYPE	L	ØB	ØD	lmax	M	CH	q.ty
RO-P-4	32	10	4	8	M10x1	13	50
RO-P-6	33,5	14	6	8	M14x1	17	50
RO-P-8	37	16	8	10	M16x1	18	50
RO-P-10	39,5	17	10	12	M17x1	20	25
RO-P-12	42	20	12	17	M20x1	24	25
RO-P-14	45	22	14	18	M22x1	25	25

FEMALE BULKHEAD CONNECTOR



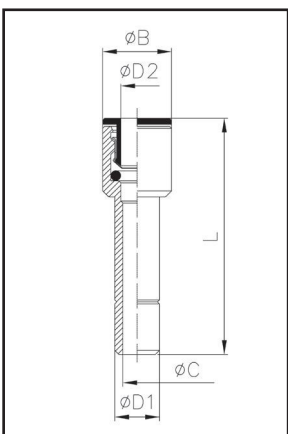
TYPE	L1	L2	B	ØD	G	H	CH1	CH2	q.ty
RO-PF-4/01	13	25	M10x1	4	G1/8	6,5	13	15	50
RO-PF-6/01	13	27	M14x1	6	G1/8	6,5	17	17	50
RO-PF-6/02	13	21	M14x1	6	G1/4	10,5	17	17	50
RO-PF-8/01	13	28	M13x1	8	G1/8	6,5	19	17	50
RO-PF-8/02	13	33	M13x1	8	G1/4	10,5	19	17	50

REDUCER



TYPE	L	$\varnothing B$	$\varnothing C$	$\varnothing D1$	$\varnothing D2$	q.ty
RO-R-6/4	28,5	9	3	6	4	50
RO-R-6/5	35,5	9,5	4	6	5	50
RO-R-8/4	31	9	3	8	4	50
RO-R-8/5	32,5	9,5	4	8	5	50
RO-R-8/6	33,5	10,5	5	8	6	50
RO-R-10/6	36,5	10,5	5	10	6	50
RO-R-10/8	38	13	7	10	8	50
RO-R-12/4	39,5	13	3	12	4	25
RO-R-12/6	39,5	13	5	12	6	25
RO-R-12/8	38,5	13	7	12	8	25
RO-R-12/10	41	15	9	12	10	25
RO-R-14/4	43	15	3	14	4	25
RO-R-14/6	43	15	5	14	6	25
RO-R-14/8	43	15	7	14	8	25
RO-R-14/10	43	15	9	14	10	25
RO-R-14/12	43	17	11	14	12	25

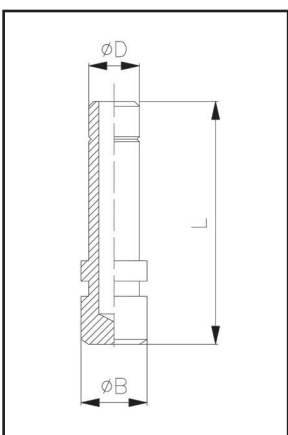
INCREASER



TYPE	L	$\varnothing B$	$\varnothing C$	$\varnothing D1$	$\varnothing D2$	q.ty
RO-E-4/6	33,5	10,5	2	4	6	25
RO-E-6/8	38	13	4	6	8	25

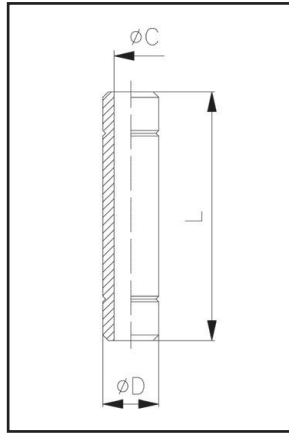
5

PLUG



TYPE	L	$\varnothing B$	$\varnothing D$	q.ty
RO-T-4	25,5	5	4	50
RO-T-6	27,5	7	6	50
RO-T-8	30	9	8	50
RO-T-10	35	11	10	25
RO-T-12	37	13	12	25
RO-T-14	39,5	15	14	25

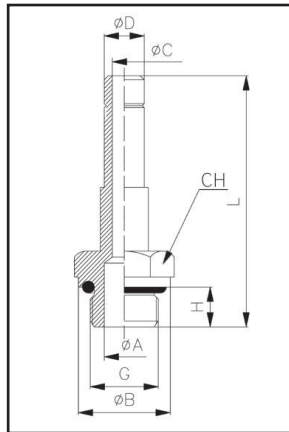
UNION CONNECTOR



TYPE	L	ØC	ØD	q.ty
RO-CI-4	32	2	4	50
RO-CI-6	35	4	6	50
RO-CI-8	38	6	8	50
RO-CI-10	45,5	8	10	50
RO-CI-12	48	10	12	25
RO-CI-14	52	12	14	20

PARALLEL LONG ADAPTER

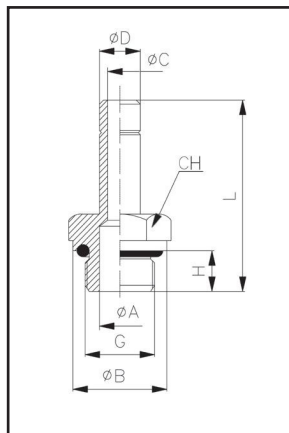
5



TYPE	L	ØA	ØB	ØC	ØD	G	H	CH	q.ty
RO-ACL-4/M7	38	4	-	2	4	M7	6	10	50
RO-ACL-4/01	39,2	6	13	2	4	G1/8	6	13	50
RO-ACL-6/M7	42	4	-	4	6	M7	6	10	50
RO-ACL-6/01	43,5	6	13	4	6	G1/8	6	13	50
RO-ACL-6/02	46	7,5	16	4	6	G1/4	8	14	50
RO-ACL-8/01	46,7	6	13	6	8	G1/8	6	13	50
RO-ACL-8/02	49,7	7,5	16	6	8	G1/4	8	14	50
RO-ACL-10/02	55,5	8	16	8	10	G1/4	8	14	50

P.S.: THIS ADAPTER CAN BE USED EVEN WITH THE UNION FITTINGS OF SERIES "RT"

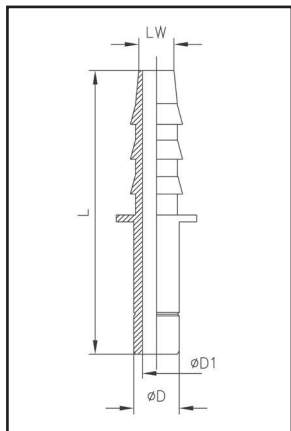
PARALLEL ADAPTER



TYPE	L	ØA	ØB	ØC	ØD	G	H	CH	q.ty
RO-AC-4/M5	24,5	2	8	2	4	M5	4	8	50
RO-AC-4/M7	26	4	-	2	4	M7	6	10	50
RO-AC-4/01	27,7	6	13	2	4	G1/8	6	13	50
RO-AC-4/02	30,2	7,5	16	2	4	G1/4	8	13	50
RO-AC-6/M5	26	2,6	8	2,6	6	M5	4	8	50
RO-AC-6/M7	28	4	-	4	6	M7	6	10	50
RO-AC-6/01	29,5	6	13	4	6	G1/8	6	13	50
RO-AC-6/02	32	7,5	16	4	6	G1/4	8	13	50
RO-AC-8/01	31	6	13	6	8	G1/8	6	13	50
RO-AC-8/02	33,5	7,5	16	6	8	G1/4	8	13	50
RO-AC-8/03	35,5	9	20	6	8	G3/8	9	13	50
RO-AC-10/01	35,5	6	-	8	10	G1/8	6	13	50
RO-AC-10/02	38	8	16	8	10	G1/4	8	13	50
RO-AC-10/03	41	8	20	8	10	G3/8	9	13	50
RO-AC-12/02	39	10	16	10	12	G1/4	8	13	50
RO-AC-12/03	42	11	20	10	12	G3/8	9	13	25
RO-AC-12/04	44	13	24	10	12	G1/2	11	16	25
RO-AC-14/03	44	12	20	12	14	G3/8	9	16	25
RO-AC-14/04	46	13	24	12	14	G1/2	11	16	25

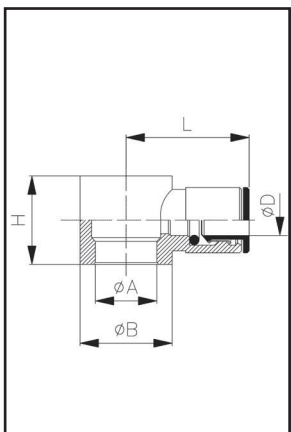
P.S.: THIS ADAPTER CAN BE USED EVEN WITH THE UNION FITTINGS OF SERIES "RT"

TUBE CONNECTOR



TYPE	L	ØD	ØD1	LW	q.ty
RO-CT-6/4	36,5	6	4	6	25
RO-CT-8/6	38	8	6	6	25
RO-CTL-8/6	43	8	6	8	25
RO-CT-12/10	57	12	10	13	25
RO-CT-14/11	60	14	11	14	25

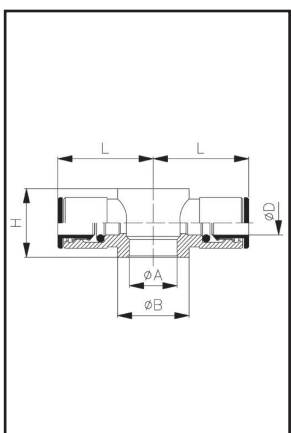
SINGLE BANJO BODY



TYPE	L	ØA	ØB	ØD	-	H	q.ty
RO-CBS-4/M5	19	5	9	4	M5	9	50
RO-CBS-4/M6	19	6	9	4	M6	9	50
RO-CBS-4/01	21	9,9	14	4	G1/8	15	50
RO-CBS-6/M5	19	5,1	10	6	M5	10,5	50
RO-CBS-6/01	23	9,9	14	6	G1/8	15	50
RO-CBS-6/02	24	13,3	18	6	G1/4	17	50
RO-CBS-8/01	24,5	9,9	14	8	G1/8	15	50
RO-CBS-8/02	26	13,3	18	8	G1/4	17	50
RO-CBS-8/03	28	16,6	21	8	G3/8	20	50
RO-CBS-10/02	27	13,3	18	10	G1/4	17	50
RO-CBS-10/03	29	16,6	21	10	G3/8	20	25
RO-CBS-12/02	28	13,6	18	12	G1/4	17	25
RO-CBS-12/03	30	16,6	21	12	G3/8	20	25

5

DOUBLE BANJO BODY



TYPE	L	ØA	ØB	ØD	-	H	q.ty
RO-CBD-4/M5	18,5	5	7	4	M5	9	50
RO-CBD-4/01	21	9,9	14	4	G1/8	15	50
RO-CBD-6/01	23	9,9	14	6	G1/8	15	50
RO-CBD-6/02	24	13,3	18	6	G1/4	17	50
RO-CBD-8/01	24,5	9,9	14	8	G1/8	15	50
RO-CBD-8/02	26	13,3	18	8	G1/4	17	50
RO-CBD-8/03	28	16,6	21	8	G3/8	20	50
RO-CBD-10/02	27	13,3	18	10	G1/4	17	50
RO-CBD-10/03	29	16,6	21	10	G3/8	20	25
RO-CBD-12/03	30	16,6	21	12	G3/8	20	25

ERROR: undefined
OFFENDING COMMAND: '~

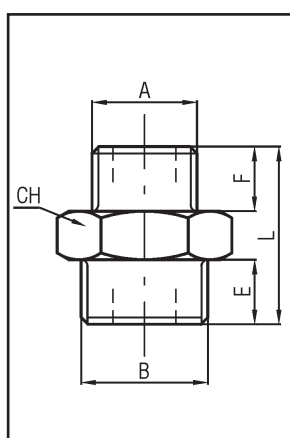
STACK:

-savelevel-

TECHNICAL DATA

Material	Nickel plated brass
Thread	Metric, taper and parallel
Size	M5 ÷ G1
Fluid	Air, water, oil, steam
Max. temperature	150 °C
Max. pressure	50 bar

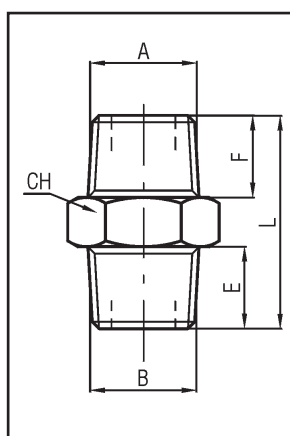
PARALLEL NIPPLE



TYPE	L	A	B	E	F	CH	q.ty
RS-N-M5	11,5	M5	M5	4	4	8	50
RS-N-M5/01	14,5	M5	G1/8	6	4	14	50
RS-N-01	16,5	G1/8	G1/8	6	6	14	50
RS-N-01/02	19	G1/8	G1/4	8	6	17	50
RS-N-01/03	20	G1/8	G3/8	9	6	19	50
RS-N-02	21	G1/4	G1/4	8	8	17	50
RS-N-02/03	22	G1/4	G3/8	9	8	19	50
RS-N-02/04	23,5	G1/4	G1/2	10	8	24	50
RS-N-03	23	G3/8	G3/8	9	9	19	50
RS-N-03/04	24,5	G3/8	G1/2	10	9	24	50
RS-N-04	25,5	G1/2	G1/2	10	10	24	25
RS-N-04/06	27,5	G1/2	G3/4	11	10	30	20
RS-N-06	28,5	G3/4	G3/4	11	11	30	20
RS-N-06/08	32	G3/4	G1	23	15	22	20

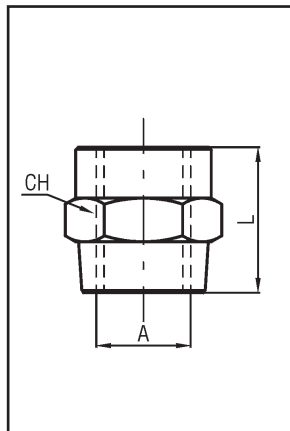
5

TAPER NIPPLE



TYPE	L	A	B	E	F	CH	q.ty
RS1-N-01	20,5	R1/8	R1/8	8	8	12	50
RS1-N-01/02	24	R1/8	R1/4	11	8	14	50
RS1-N-01/03	24,5	R1/8	R3/8	11,5	8	17	50
RS1-N-02	27	R1/4	R1/4	11	11	14	50
RS1-N-02/03	27,5	R1/4	R3/8	11,5	11	17	50
RS1-N-02/04	30,5	R1/4	R1/2	14	11	22	50
RS1-N-03	28	R3/8	R3/8	11,5	11,5	17	50
RS1-N-03/04	31	R3/8	R1/2	14	11,5	22	50
RS1-N-04	33,5	R1/2	R1/2	14	14	22	50
RS1-N-04/06	37	R1/2	R3/4	16,5	14	27	25
RS1-N-06	39,5	R3/4	R3/4	16,5	16,5	27	20
RS1-N-06/08	42,5	R3/4	R1	19	16,5	34	10
RS1-N-08	45,5	R1	R1	19,0	19	34	10

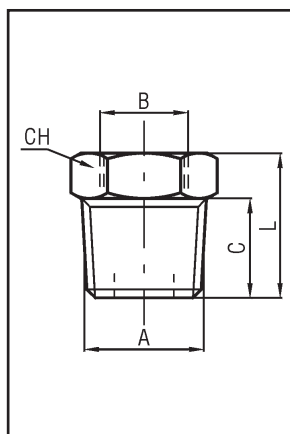
SLEEVE



TYPE	L	A	CH	q.ty
RS-M-M5	11	M5	8	50
RS-M-01	15	G1/8	14	50
RS-M-02	22	G1/4	17	50
RS-M-03	23	G3/8	22	50
RS-M-04	28	G1/2	26	25
RS-M-06	32	G3/4	32	20

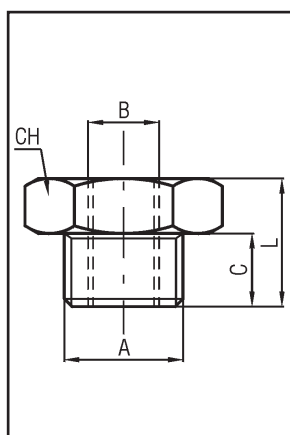
TAPER REDUCER

5



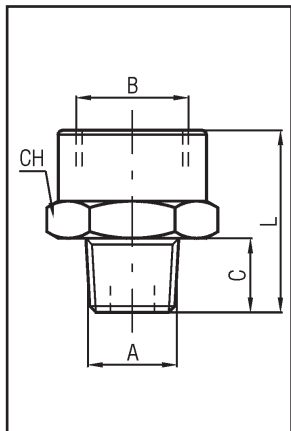
TYPE	L	A	B	C	CH	q.ty
RS1-RMF-02/01	16	R1/4	R1/8	11	14	50
RS1-RMF-03/01	16,5	R3/8	R1/8	11,5	17	50
RS1-RMF-04/01	19,5	R1/2	R1/8	14	22	25
RS1-RMF-03/02	16,5	R3/8	R1/4	11,5	17	50
RS1-RMF-04/02	19,5	R1/2	R1/4	14	22	50
RS1-RMF-04/03	19,5	R1/2	R3/8	14	22	50
RS1-RMF-06/04	23	R3/4	R1/2	16,5	27	20
RS1-RMF-06/03	23,5	R3/4	R3/8	16,5	27	20

PARALLEL REDUCER



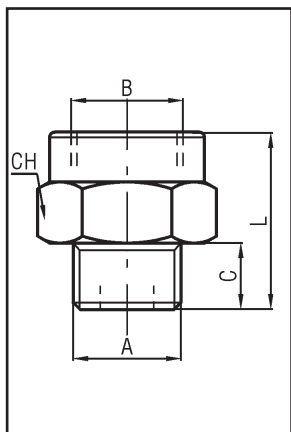
TYPE	L	A	B	C	CH	q.ty
RS-RMF-01/M5	10,5	G1/8	M5	6	14	50
RS-RMF-02/01	13	G1/4	G1/8	8	17	50
RS-RMF-03/01	14	G3/8	G1/8	9	19	50
RS-RMF-03/02	14	G3/8	G1/4	9	19	50
RS-RMF-04/01	15,5	G1/2	G1/8	10	24	25
RS-RMF-04/02	15,5	G1/2	G1/4	10	24	50
RS-RMF-04/03	15,5	G1/2	G3/8	10	24	50
RS-RMF-06/03	17,5	G3/4	G3/8	11	30	25
RS-RMF-06/04	17,5	G3/4	G1/2	11	30	20

TAPER MALE/FEMALE EXTENSION



TYPE	L	A	B	C	CH	q.ty
RS1-PMF-01	18	R1/8	G1/8	8	14	50
RS1-PMF-01/02	21,5	R1/8	G1/4	8	17	50
RS1-PMF-01/03	22,5	R1/8	G3/8	8	22	50
RS1-PMF-02	24,5	R1/4	G1/4	11	17	50
RS1-PMF-02/03	25,5	R1/4	G3/8	11	22	50
RS1-PMF-02/04	29	R1/4	G1/2	11,5	24	50
RS1-PMF-03	26	R3/8	G3/8	11,5	22	50
RS1-PMF-03/04	29,5	R3/8	G1/2	11,5	24	50
RS1-PMF-04	32	R1/2	G1/2	14	26	25
RS1-PMF-04/06	35	R1/2	G3/4	14	32	20

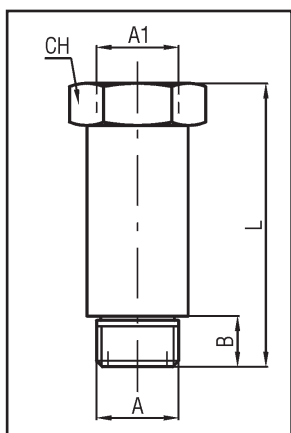
PARALLEL MALE/FEMALE EXTENSION



TYPE	L	A	B	C	CH	q.ty
RS-PMF-M5/01	14,5	M5	G1/8	4	14	50
RS-PMF-01	16	G1/8	G1/8	6	14	50
RS-PMF-01/02	19,5	G1/8	G1/4	6	17	50
RS-PMF-01/03	20,5	G1/8	G3/8	6	22	50
RS-PMF-02	21,5	G1/4	G1/4	8	17	50
RS-PMF-02/03	22,5	G1/4	G3/8	8	22	50
RS-PMF-02/04	26	G1/4	G1/2	8	24	50
RS-PMF-03	23,5	G3/8	G3/8	9	22	50
RS-PMF-03/04	27	G3/8	G1/2	9	24	50
RS-PMF-04	28	G1/2	G1/2	10	26	25

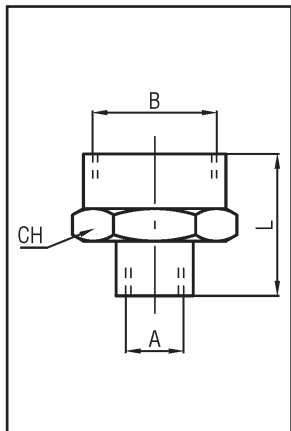
5

PARALLEL MALE/FEMALE LONG EXTENSION



TYPE	L	A	A1	B	CH	q.ty
RS-PL-01A	22	G1/8	G1/8	6	14	50
RS-PL-01B	42	G1/8	G1/8	6	14	50
RS-PL-01C	51	G1/8	G1/8	6	14	50
RS-PL-02A	35	G1/4	G1/4	8	17	50
RS-PL-02B	51	G1/4	G1/4	8	17	50

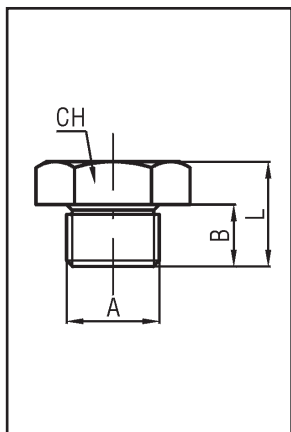
REDUCING SLEEVE



TYPE	L	A	B	CH	q.ty
RS-MR-M5/01	13,5	M5	G1/8	14	50
RS-MR-01/02	19	G1/8	G1/4	17	50
RS-MR-01/03	20	G1/8	G3/8	22	50
RS-MR-01/04	24	G1/8	G1/2	24	50
RS-MR-02/03	22,5	G1/4	G3/8	22	50
RS-MR-02/04	26	G1/4	G1/2	24	50
RS-MR-03/04	26	G3/8	G1/2	24	50
RS-MR-04/06	30	G1/2	G3/4	32	25

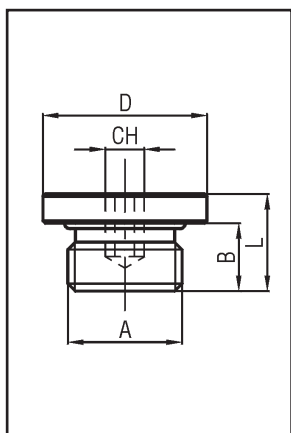
PARALLEL MALE PLUG

5



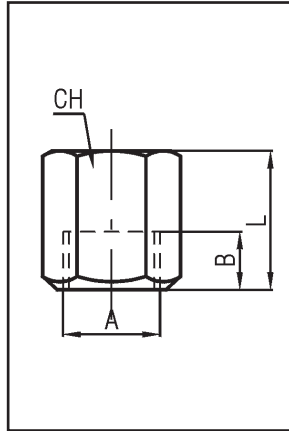
TYPE	L	A	B	CH	q.ty
RS-TC-M5	7	M5	4	8	50
RS-TC-01	10	G1/8	6,5	14	50
RS-TC-02	12,5	G1/4	8	17	50
RS-TC-03	13,5	G3/8	9	19	50
RS-TC-04	15,5	G1/2	10	24	50
RS-TC-06	16,5	G3/4	11	30	25
RS-TC-08	19	G1	13	38	10

PARALLEL MALE PLUG WITH O-RING



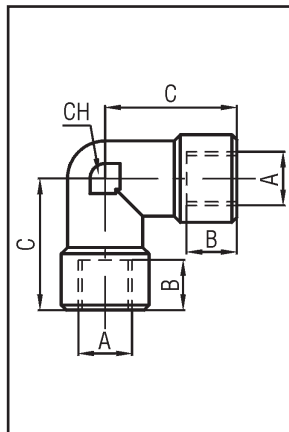
TYPE	L	A	B	ØD	CH	q.ty
RS-TMO-M5	7,2	M5	4,5	8	2,5	50
RS-TMO-01	9,5	G1/8	6,5	14	5	50
RS-TMO-02	11,5	G1/4	8	17	6	50
RS-TMO-03	12,5	G3/8	9	20	8	50
RS-TMO-04	14	G1/2	10	26	10	25

FEMALE PLUG



TYPE	L	A	B	CH	q.ty
RS-TFE-01	11,5	G1/8	8	14	50
RS-TFE-02	15	G1/4	11	17	50
RS-TFE-03	15,5	G3/8	11,5	20	50
RS-TFE-04	20	G1/2	14	24	25

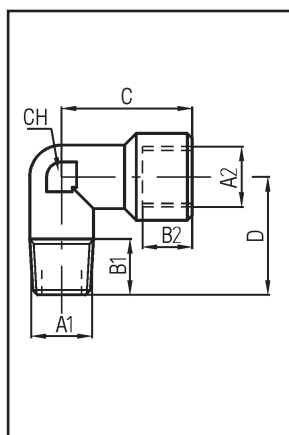
FEMALE ELBOW



TYPE	A	B	C	CH	q.ty
RS-GF-M5	M5	4	11	8	50
RS-GF-01	G1/8	8	21	10	50
RS-GF-02	G1/4	11	25,5	13	50
RS-GF-03	G3/8	11,5	28	17	50
RS-GF-04	G1/2	14	33,5	21	25
RS-GF-06	G3/4	16,5	36,5	25	20
RS-GF-08	G1	19	45	30	10

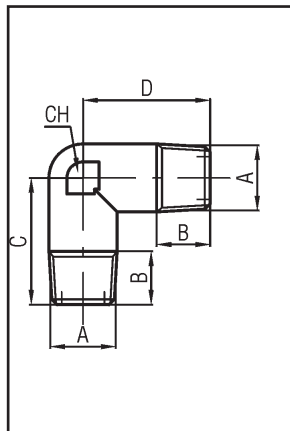
5

TAPER MALE/FEMALE ELBOW



TYPE	A1	A2	B1	B2	C	CH	D	q.ty
RS-GMF-M5	M5	M5	4	5	11,5	9	11	50
RS-GMF-02/01	R1/4	G1/8	11	8	21,5	10	21	50
RS-GMF-01	R1/8	G1/8	8	8	18,5	10	21	50
RS-GMF-02	R1/4	G1/4	11	11	23,5	13	25,5	50
RS-GMF-03	R3/8	G3/8	11,5	11,5	26	17	28	50
RS-GMF-04	R1/2	G1/2	14	14	31	21	33,5	25
RS-GMF-06	R3/4	G3/4	16	16,5	33	25	36,5	20
RS-GMF-08	R1	G1	19	19	39	30	45	10

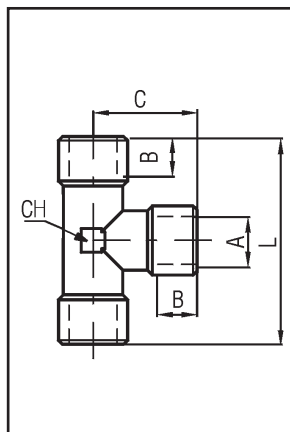
TAPER MALE ELBOW



TYPE	A	B1	C	D	CH	q.ty
RS-GM-M5	M5	4	11,5	11,5	8	50
RS-GM-01	R1/8	8	18,5	18,5	10	50
RS-GM-02/01	R1/4	11	21,5	19	10	25
RS-GM-02	R1/4	11	23,5	23,5	13	50
RS-GM-03	R3/8	11,5	26	26	17	50
RS-GM-04	R1/2	14	31	31	21	25
RS-GM-06	R3/4	16	33	33	25	20
RS-GM-08	R1	17	39	39	30	10

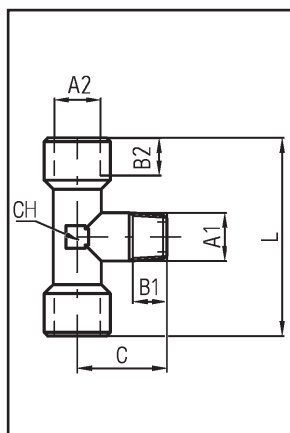
FEMALE TEE

5



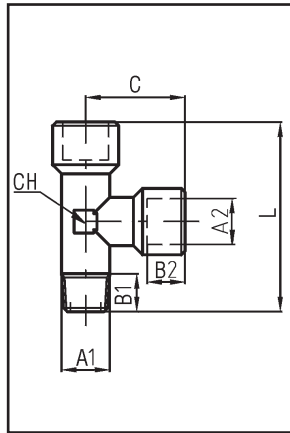
TYPE	L	A	B	C	CH	q.ty
RS-TF-M5	22	M5	5	11	9	50
RS-TF-01	42	G1/8	8	21	10	50
RS-TF-02	51	G1/4	11	25,5	13	50
RS-TF-03	56	G3/8	11,5	28	17	50
RS-TF-04	67	G1/2	14	33,5	21	25
RS-TF-06	73	G3/4	16,5	36,5	25	20
RS-TF-08	90	G1	19	45	30	10

TAPER UNION MALE TEE



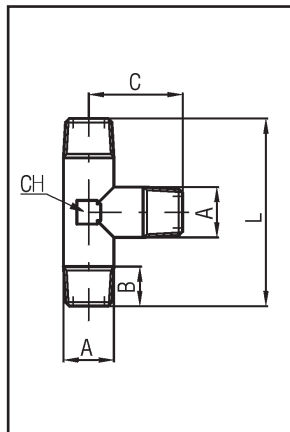
TYPE	L	A1	A2	B1	B2	C	CH	q.ty
RS-TMC-M5	22	M5	M5	4	5	11,5	9	50
RS-TMC-01	42	R1/8	G1/8	8	8	18,5	10	50
RS-TMC-02	51	R1/4	G1/4	11	11	23,5	13	50
RS-TMC-03	56	R3/8	G3/8	11,5	11,5	26	17	50
RS-TMC-04	67	R1/2	G1/2	14	14	31	21	25
RS-TMC-06	73	R3/4	G3/4	16	16,5	33	25	20
RS-TMC-08	90	R1	G2	17,5	19	39	30	10

TAPER LATERAL MALE TEE



TYPE	L	A1	A2	B1	B2	C	CH	q.ty
RS-TML-M5	22,5	M5	M5	4	5	11	9	50
RS-TML-01	39,5	R1/8	G1/8	8	8	21	10	50
RS-TML-02	49	R1/4	G1/4	11	11	25,5	13	50
RS-TML-03	54	R3/8	G3/8	11,5	11,5	28	17	50
RS-TML-04	64,5	R1/2	G1/2	14	14	33,5	21	25
RS-TML-06	69,5	R3/4	G3/4	16,5	16,5	36,5	25	20
RS-TML-08	84	R1	G1	17,5	19	45	30	10

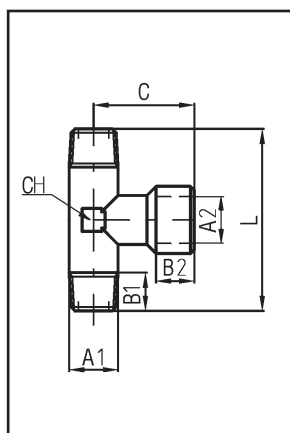
TAPER MALE TEE



TYPE	L	A	B	C	CH	q.ty
RS-TM-01	37	R1/8	8	18,5	10	50
RS-TM-02	47	R1/4	11	23,5	13	50
RS-TM-03	52	R3/8	11,5	26	17	50
RS-TM-04	62	R1/2	14	31	21	25
RS-TM-06	66,4	R3/4	16,2	33	25	20
RS-TM-08	78	R1	17,5	39	30	10

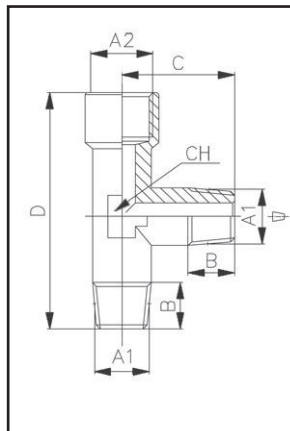
5

TAPER UNION FEMALE TEE



TYPE	L	A1	A2	B1	B2	C	CH	q.ty
RS-TCF-01	37	R1/8	G1/8	8	8	21	10	50
RS-TCF-02	47	R1/4	G1/4	11	11	25,5	13	50
RS-TCF-03	52	R3/8	G3/8	11,5	11,5	28	17	50
RS-TCF-04	62	R1/2	G1/2	14	14	33,5	21	25
RS-TCF-06	66,4	R3/4	G3/4	16,2	16,5	36,5	25	20
RS-TCF-08	78	R1	G1	17,5	19	45	30	10

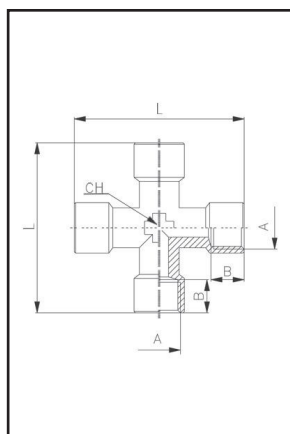
TAPER LATERAL FEMALE TEE



TYPE	A1	A2	B	C	D	CH	q.ty
RS-TLF-01	R1/8	G1/8	8	18,5	39,5	10	50
RS-TLF-02	R1/4	G1/4	11	23,5	49	13	50
RS-TLF-03	R3/8	G3/8	11,5	26	54	17	50
RS-TLF-04	R1/2	G1/2	14	31	64,5	21	25
RS-TLF-06	R3/4	G3/4	16	33	69,5	25	20
RS-TLF-08	R1	G1	17,5	39	84	30	10

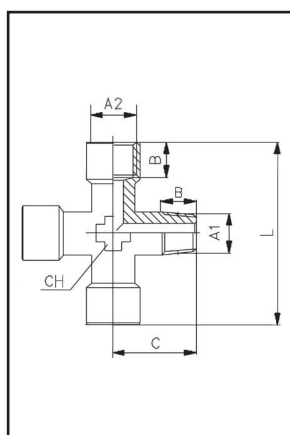
FEMALE CROSS

5



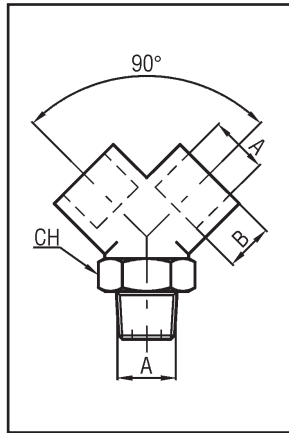
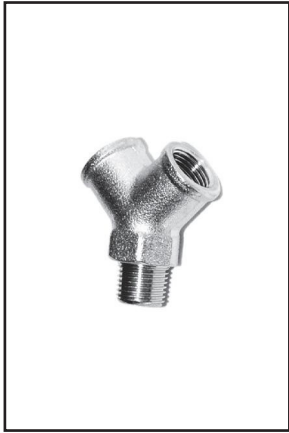
TYPE	L	A	B	CH	q.ty
RS-CF-01	42	G1/8	8	10	25
RS-CF-02	51	G1/4	11	13	25
RS-CF-03	56	G3/8	11,5	17	25
RS-CF-04	67	G1/2	14	21	20

TAPER M/F/F/F CROSS (M=MALE; F=FEMALE)



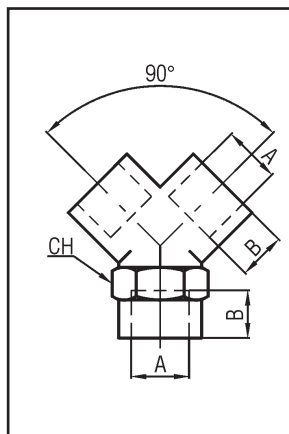
TYPE	L	A1	A2	B	C	CH	q.ty
RS-MFFF-01	42	R1/8	G1/8	8	18,5	10	25
RS-MFFF-02	49	R1/4	G1/4	11	23,5	13	25
RS-MFFF-03	56	R3/8	G3/8	11,5	26	17	25
RS-MFFF-04	67	R1/2	G1/2	14	31	21	20

TAPER MALE Y CONNECTOR



TYPE	A	B	CH	q.ty
RS-YCM-01	R1/8	8	13	25
RS-YCM-02	R1/4	11	17	25
RS-YCM-03	R3/8	11,5	20	20
RS-YCM-04	R1/2	14	25	10

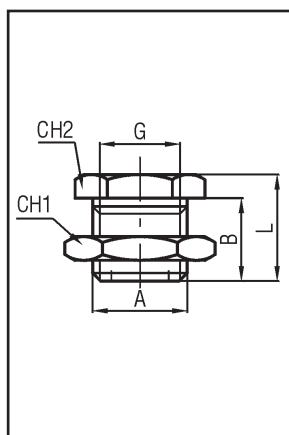
FEMALE Y



TYPE	A	B	CH	q.ty
RS-YF-01	G1/8	8	13	25
RS-YF-02	G1/4	11	17	25
RS-YF-03	G3/8	11,5	20	20
RS-YF-04	G1/2	14	25	10

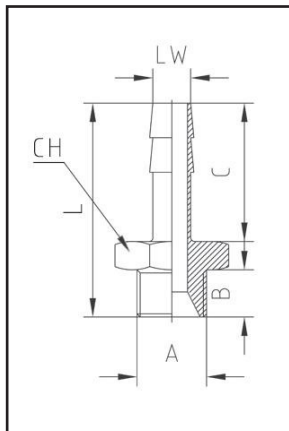
5

FEMALE BULKHEAD CONNECTOR



TYPE	L	A	B	G	CH1	CH2	q.ty
RS-PF-M5	14	M10x1	10,5	M5	14	14	50
RS-PF-01	18	M16x1,5	14	G1/8	22	19	50
RS-PF-02	25	M20x1,5	21	G1/4	27	24	50
RS-PF-03	26	M26x1,5	21	G3/8	32	30	25
RS-PF-04	33	M28x1,5	27	G1/2	36	32	20

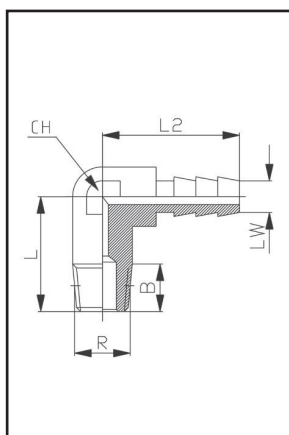
PARALLEL MALE HOSE ADAPTER



TYPE	L	A	B	C	LW	CH	q.ty
RS-PM-4,5/M5	22,5	M5	4	15	4,5	8	50
RS-PM-6/01	29,5	G1/8	6	19	6	12	50
RS-PM-6/02	32	G1/4	8	19	6	14	50
RS-PM-7/01	29,5	G1/8	6	19	7	12	50
RS-PM-7/02	32	G1/4	8	19	7	14	50
RS-PM-8/01	29,5	G1/8	6	19	8	12	50
RS-PM-8/02	32	G1/4	8	19	8	14	50
RS-PM-8/03	33	G3/8	9	19	8	19	50
RS-PM-9/01	29,5	G1/8	6	19	9	12	50
RS-PM-9/02	32	G1/4	8	19	9	14	50
RS-PM-9/03	33	G3/8	9	19	9	19	50
RS-PM-10/01	30,5	G1/8	6	20	10	12	50
RS-PM-10/02	33	G1/4	8	20	10	14	50
RS-PM-10/03	34	G3/8	9	20	10	19	50
RS-PM-12/02	33	G1/4	8	20	12	14	50
RS-PM-12/03	34	G3/8	9	20	12	19	50
RS-PM-12/04	35,5	G1/2	10	20	12	22	50
RS-PM-14/03	36	G3/8	9	22	14	19	50
RS-PM-14/04	37,5	G1/2	10	22	14	22	50
RS-PM-17/03	38	G3/8	9	24	17	19	50
RS-PM-17/04	39,5	G1/2	10	24	17	22	50
RS-PM-18/06	41,5	G3/4	11	24	18	30	20
RS-PM-20/04	39,5	G1/2	10	24	20	22	25
RS-PM-20/06	41,5	G3/4	11	24	20	30	20

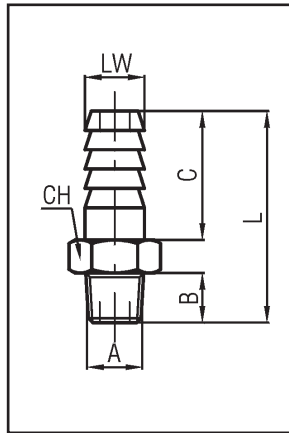
5

TAPER ELBOW HOSE ADAPTER



TYPE	L	L2	B	R	LW	CH	q.ty
RS-PG-6/01	18,5	22,5	8	R1/8	6	8	50
RS-PG-6/01A	23	22,5	8	R1/8	6	8	50
RS-PG-6/02	23	23	11	R1/4	6	9	50
RS-PG-7/01	18,5	22,5	8	R1/8	7	8	50
RS-PG-7/01A	23	22,5	8	R1/8	7	8	50
RS-PG-7/02	23	23	11	R1/4	7	9	50

TAPER MALE HOSE ADAPTER



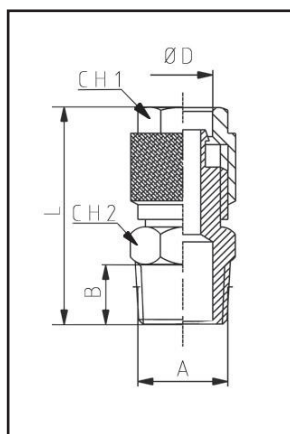
TYPE	L	A	B	C	LW	CH	q.ty
RS1-PM-6/01	31,5	R1/8	8	19	6	12	50
RS1-PM-6/02	35	R1/4	11	19	6	14	50
RS1-PM-7/01	31,5	R1/8	8	19	7	12	50
RS1-PM-7/02	35	R1/4	11	19	7	12	50
RS1-PM-8/01	31,5	R1/8	8	19	8	12	50
RS1-PM-8/02	35	R1/4	11	19	8	14	50
RS1-PM-9/01	31,5	R1/8	8	19	9	12	50
RS1-PM-9/02	35	R1/4	11	19	9	14	50
RS1-PM-9/03	35,5	R3/8	11,5	19	9	17	50
RS1-PM-9/04	38,5	R1/2	14	19	9	22	50
RS1-PM-10/01	32,5	R1/8	8	20	10	12	50
RS1-PM-10/02	36	R1/4	11	20	10	14	50
RS1-PM-10/03	36,5	R3/8	11,5	20	10	17	50
RS1-PM-10/04	39,5	R1/2	14	20	10	22	50
RS1-PM-12/02	36	R1/4	11	20	12	14	50
RS1-PM-12/03	36,5	R3/8	11,5	20	12	17	50
RS1-PM-12/04	39,5	R1/2	14	20	12	22	50
RS1-PM-14/03	38,5	R3/8	11,5	22	14	17	50
RS1-PM-14/04	41,5	R1/2	14	22	14	22	50
RS1-PM-16/03	38,5	R3/8	11,5	22	16	17	50
RS1-PM-16/04	41,5	R1/2	14	22	16	22	50
RS1-PM-16/06	45	R3/4	16,5	22	16	27	50
RS1-PM-17/03	40,5	R3/8	11,5	24	17	18	50
RS1-PM-17/04	43,5	R1/2	14	24	17	22	50
RS1-PM-18/03	40,5	R3/8	11,5	24	18	19	50
RS1-PM-18/04	43,5	R1/2	14	24	18	22	50
RS1-PM-18/06	47	R3/4	16,5	24	18	27	50
RS1-PM-20/03	41	R3/8	11,5	24	20	22	25
RS1-PM-20/04	43,5	R1/2	14	24	20	22	25
RS1-PM-20/06	46,5	R3/4	16,5	24	20	27	20
RS1-PM-25/06	53	R3/4	16,5	30	25	27	20
RS1-PM-25/08	56	R1	19	30	25	34	10

TECHNICAL DATA

Material	Nickel plated brass
Thread	Metric, taper and parallel
Size	M5 ÷ G1/2
Max. pressure	60 bar
Recommended tubes materials	Polyamide, polyethylene, polyurethane

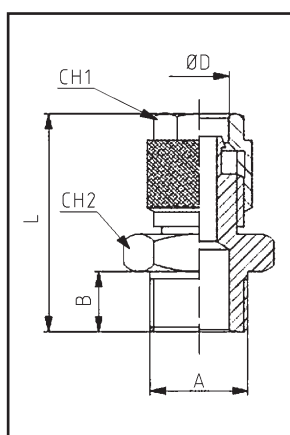
TAPER STRAIGHT MALE

5



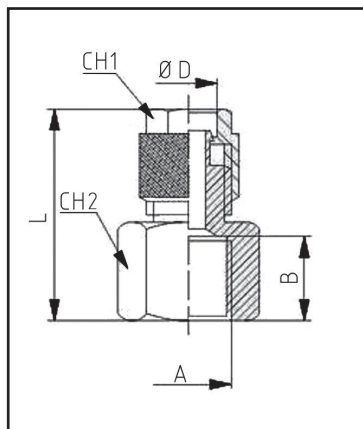
TYPE	L	A	B	ØD	CH1	CH2	q.tà
RC1-DM-4/01	23,8	R1/8	8	4/2,7	8	12	50
RC1-DM-5/01	25	R1/8	8	5/3	8	12	50
RC1-DM-6/01	27,5	R1/8	8	6/4	12	12	50
RC1-DM-6/02	31	R1/4	11	6/4	12	14	50
RC1-DM-6/03	31,5	R3/8	11,5	6/4	12	17	50
RC1-DM-8/01	27,5	R1/8	8	8/6	14	12	50
RC1-DM-8/02	31	R1/4	11	8/6	14	14	50
RC1-DM-8/03	31,5	R3/8	11,5	8/6	14	17	50
RC1-DM-8/04	34,5	R1/2	14	8/6	14	22	50
RC1-DM-10/01	29,5	R1/8	8	10/8	16	14	50
RC1-DM-10/02	32,5	R1/4	11	10/8	16	14	50
RC1-DM-10/03	33	R3/8	11,5	10/8	16	17	25
RC1-DM-10/04	36	R1/2	14	10/8	16	22	25
RC1-DM-12/03	34,5	R3/8	11,5	12/10	18	17	20
RC1-DM-12/04	37,5	R1/2	14	12/10	18	22	20
RC1-DM-15/04	39,5	R1/2	14	15/12,5	22	22	10

PARALLEL STRAIGHT MALE



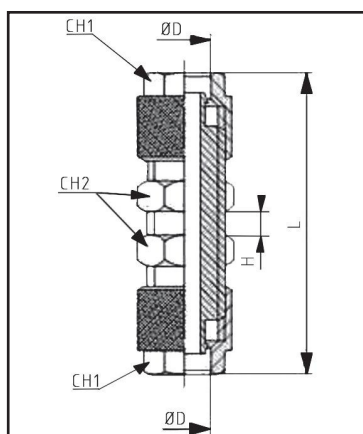
TYPE	L	A	B	ØD	CH1	CH2	q.tà
RC-DM-5/01	23	G1/8	6	5/3	8	14	50
RC-DM-6/01	25,5	G1/8	6	6/4	12	14	50
RC-DM-6/02	28	G1/4	8	6/4	12	17	50
RC-DM-6/03	29	G3/8	9	6/4	12	19	50
RC-DM-8/01	25,5	G1/8	6	8/6	14	14	50
RC-DM-8/02	28	G1/4	8	8/6	14	17	50
RC-DM-8/03	29	G3/8	9	8/6	14	19	50
RC-DM-10/01	27	G1/8	6	10/8	16	14	50
RC-DM-10/02	29,5	G1/4	8	10/8	16	17	50
RC-DM-10/03	30,5	G3/8	9	10/8	16	19	25
RC-DM-10/04	32	G1/2	10	10/8	16	24	25
RC-DM-12/03	32	G3/8	9	12/10	18	19	20
RC-DM-12/04	33,5	G1/2	10	12/10	18	24	20
RC-DM-15/04	35,5	G1/2	10	15/12,5	22	24	10

PARALLEL STRAIGHT FEMALE



TYPE	L	A	B	ØD	CH1	CH2	q.ty
RC-DF-4/01	21,3	G1/8	8	4/2,7	8	14	50
RC-DF-5/01	22,5	G1/8	8	5/3	8	14	50
RC-DF-6/01	25	G1/8	8	6/4	12	14	50
RC-DF-6/02	29	G1/4	11	6/4	12	17	50
RC-DF-6/03	29,5	G3/8	11,5	6/4	12	20	50
RC-DF-8/01	25	G1/8	8	8/6	14	14	50
RC-DF-8/02	29	G1/4	11	8/6	14	17	50
RC-DF-8/03	29,5	G3/8	11,5	8/6	14	20	50
RC-DF-10/01	26,5	G1/8	8	10/8	16	14	50
RC-DF-10/02	30,5	G1/4	11	10/8	16	17	50
RC-DF-10/03	31	G3/8	11,5	10/8	16	20	25
RC-DF-10/04	34,5	G1/2	14	10/8	16	24	20
RC-DF-12/03	32,5	G3/8	11,5	12/10	18	20	20

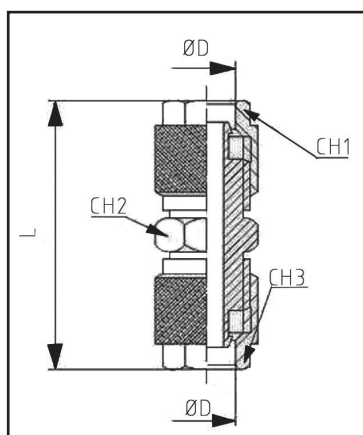
BULKHEAD CONNECTOR



TYPE	L	ØD	H/max	CH1	CH2	q.ty
RC-P4	36,7	4/2,7	8,5	8	8	50
RC-P5	40	5/3	8,5	8	9	50
RC-P6	48	6/4	10,5	12	14	50
RC-P8	48	8/6	10,5	14	16	50
RC-P10	50	10/8	8,5	16	17	25
RC-P12	53	12/10	8,5	18	19	20
RC-P15	58	15/12,5	8,5	22	24	10

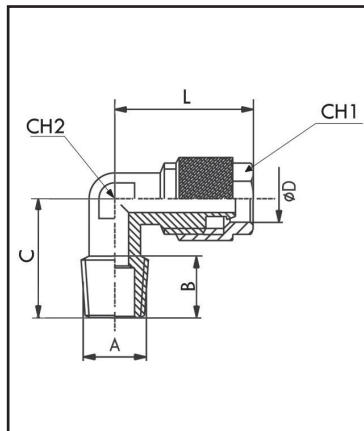
5

UNION STRAIGHT



TYPE	L	ØD	CH1	CH2	CH3	q.ty
RC-DI-4	26,1	4/2,7	8	8	8	50
RC-DI-5	28,5	5/3	8	8	8	50
RC-DI-6	34,5	6/4	12	12	12	50
RC-DI-8/6	35	8/6 x 6/4	14	14	12	50
RC-DI-8	35	8/6	14	14	14	50
RC-DI-10	38	10/8	16	16	14	25
RC-DI-12	41	12/10	18	17	18	25
RC-DI-15	45,5	15/12,5	22	22	22	10

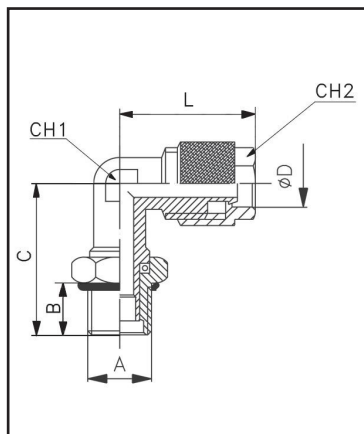
TAPER ELBOW MALE



TYPE	L	A	B	C	ØD	CH1	CH2	q.ty
RC1-G-4/01	19,5	R1/8	8	17	4/2,7	8	8	50
RC1-G-5/01	21,5	R1/8	8	17	5/3	8	8	50
RC1-G-6/01	22,5	R1/8	8	17	6/4	12	8	50
RC1-G-6/02	22,5	R1/4	11	20	6/4	12	10	50
RC1-G-6/03	23,5	R3/8	11,5	22,5	6/4	12	11	50
RC1-G-8/01	22,5	R1/8	8	17	8/6	14	10	50
RC1-G-8/02	22,5	R1/4	11	20	8/6	14	10	50
RC1-G-8/03	24	R3/8	11,5	20	8/6	14	11	50
RC1-G-10/01	25,5	R1/8	8	22,5	10/8	16	11	50
RC1-G-10/02	25,5	R1/4	11	18,5	10/8	16	11	50
RC1-G-10/03	25,5	R3/8	11,5	21,5	10/8	16	11	25
RC1-G-10/04	28	R1/2	14	28	10/8	16	17	25
RC1-G-12/02	30	R1/4	11	24	12/10	18	14	20
RC1-G-12/03	30	R3/8	11,5	24,5	12/10	18	14	20
RC1-G-12/04	30,5	R1/2	14	28	12/10	18	17	20
RC1-G-15/04	34	R1/2	14	28	15/12,5	22	17	10

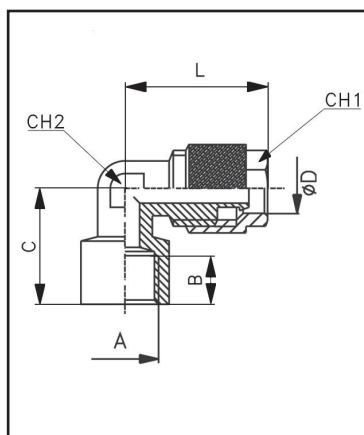
PARALLEL SWIVEL ELBOW WITH O-RING

5



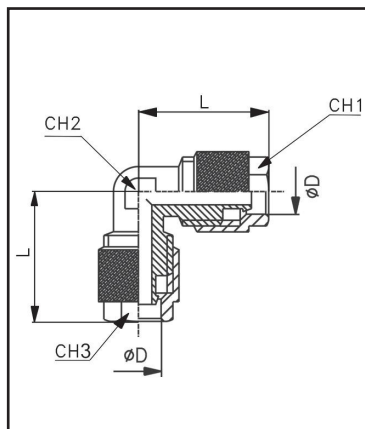
TYPE	L	A	B	C	ØD	CH1	CH2	q.ty
RC-GG-4/01	21,5	G1/8	6	22,5	4/2,7	12	14	50
RC-GG-6/01	22,5	G1/8	6	22,5	6/4	12	14	50
RC-GG-6/02	23,5	G1/4	8	25	6/4	12	17	50
RC-GG-8/01	23,5	G1/8	6	22,5	8/6	14	14	50
RC-GG-8/02	23,5	G1/4	8	25	8/6	14	17	50
RC-GG-10/02	25,5	G1/4	8	25,5	10/8	16	17	25

PARALLEL ELBOW FEMALE



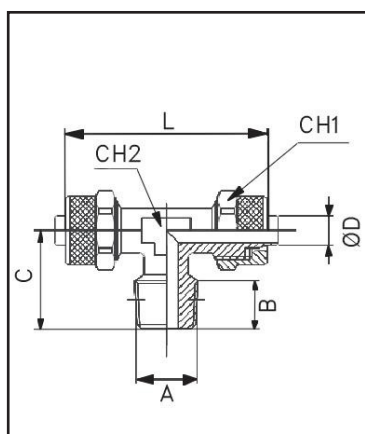
TYPE	L	A	B	C	ØD	CH1	CH2	q.ty
RC-GF-5/01	21,5	G1/8	8	19	5/3	8	10	50
RC-GF-6/01	22,5	G1/8	8	19	6/4	12	10	50
RC-GF-6/02	25	G1/4	10,5	23	6/4	12	11	50
RC-GF-8/01	22,5	G1/8	8	19	8/6	14	10	50
RC-GF-8/02	25	G1/4	10,5	23	8/6	14	11	50
RC-GF-10/02	26	G1/4	11	23,5	10/8	16	13	25
RC-GF-12/03	30,5	G3/8	11,5	28	12/10	18	17	20

UNION ELBOW



TYPE	L	ØD	CH1	CH2	CH3	q.ty
RC-GI-4	20,3	4/2,7	8	8	8	50
RC-GI-5	21,5	5/3	8	8	8	50
RC-GI-6	21,5	6/4	12	8	12	50
RC-GI-8/6	22,5	8/6	12	10	14	50
RC-GI-8	22,5	8/6	14	10	14	50
RC-GI-10	25,5	10/8	16	11	16	25
RC-GI-12	30	12/10	18	14	18	20
RC-GI-15	34	15/12,5	22	17	22	10

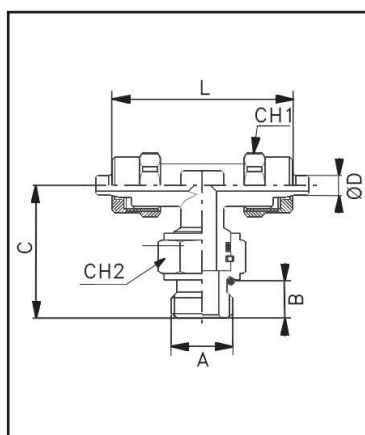
TAPER CENTRAL MALE TEE



TYPE	L	A	B	C	ØD	CH1	CH2	q.ty
RC1-TC-4/01	40,6	R1/8	8	17	4/2,7	8	8	50
RC1-TC-5/M5	43	M5	4	15	5/3	8	8	50
RC1-TC-5/01	43	R1/8	8	17	5/3	8	8	50
RC1-TC-6/01	45	R1/8	8	17	6/4	11	8	50
RC1-TC-6/02	45,5	R1/4	11	20,5	6/4	11	10	50
RC1-TC-6/03	47	R3/8	11,5	22,5	6/4	12	11	50
RC1-TC-8/01	45,5	R1/8	8	17,5	8/6	14	10	50
RC1-TC-8/02	45,5	R1/4	11	20,5	8/6	14	10	50
RC1-TC-8/03	48	R3/8	11,5	21,5	8/6	14	11	50
RC1-TC-10/01	51	R1/8	8	18,5	10/8	16	11	50
RC1-TC-10/02	51	R1/4	11	21,5	10/8	16	11	50
RC1-TC-10/03	51	R3/8	11,5	22,5	10/8	16	11	25
RC1-TC-10/04	57	R1/2	14	28	10/8	16	17	25
RC1-TC-12/03	60	R3/8	11,5	22,5	12/10	18	14	20
RC1-TC-12/04	61	R1/2	14	28	12/10	18	17	20
RC1-TC-15/04	68	R1/2	14	28	15/12,5	22	17	10

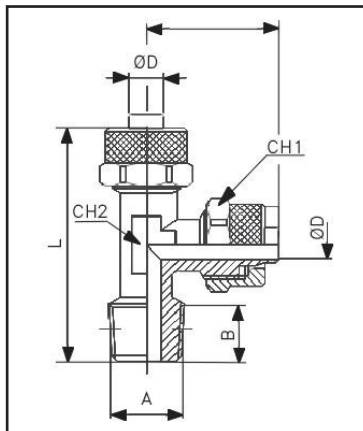
5

PARALLEL SWIVELLING CENTRAL MALE TEE



TYPE	L	A	B	C	ØD	CH1	CH2	q.ty
RC-TG-4/01	45	G1/8	6	25,7	4/2,7	8	13	25
RC-TG-6/01	45	G1/8	6	25,7	6/4	12	13	25
RC-TG-6/02	45,5	G1/4	8	29	6/4	12	16	20
RC-TG-8/02	45,5	G1/4	8	28	8/6	14	16	20
RC-TG-10/02	51	G1/4	8	29	10/8	16	16	10

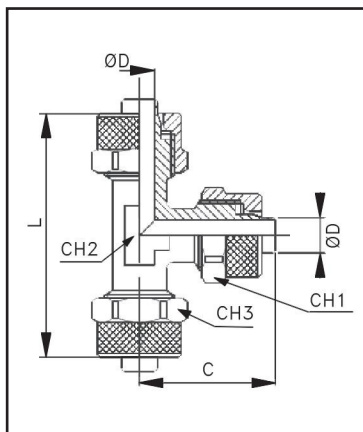
TAPER LATERAL MALE TEE



TYPE	L	A	B	C	ØD	CH 1	CH 2	q.ty
RC1-TL-4/01	38	R1/8	8	21,5	4/2,7	8	8	50
RC1-TL-5/M5	36,5	M5	4	21,5	5/3	8	8	50
RC1-TL-5/01	38,5	R1/8	8	21,5	5/3	8	8	50
RC1-TL-6/01	39,5	R1/8	8	22,5	6/4	11	8	50
RC1-TL-6/02	42,5	R1/4	11	22,5	6/4	11	10	50
RC1-TL-6/03	46,5	R3/8	11,5	24	6/4	12	11	50
RC1-TL-8/01	40,5	R1/8	8	22,5	8/6	14	10	50
RC1-TL-8/02	43,5	R1/4	11	22,5	8/6	14	10	50
RC1-TL-8/03	46,5	R3/8	11,5	23,5	8/6	14	11	50
RC1-TL-10/01	44	R1/8	8	25,5	10/8	16	11	50
RC1-TL-10/02	46,5	R1/4	11	25,5	10/8	16	11	50
RC1-TL-10/03	48	R3/8	11,5	25,5	10/8	16	11	25
RC1-TL-10/04	57	R1/2	14	29	10/8	16	17	25
RC1-TL-12/03	54,5	R3/8	11,5	30	12/10	18	14	20
RC1-TL-12/04	58,5	R1/2	14	30,5	12/10	18	17	20
RC1-TL-15/04	62	R1/2	14	34	15/12,5	22	17	10

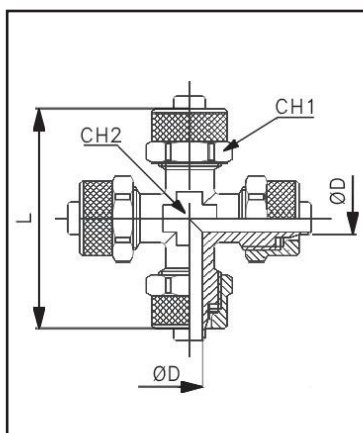
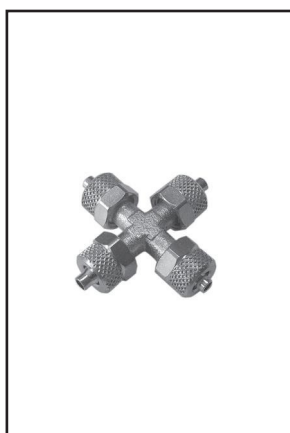
UNION TEE

5



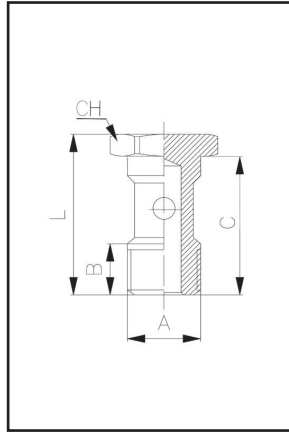
TYPE	L	C	ØD	CH 1	CH 2	CH 3	q.ty
RC-TI-4	20,3	20,3	4/2,7	8	8	8	50
RC-TI-5	43	21,5	5/3	8	8	8	50
RC-TI-6	45	22,5	6/4	12	8	12	50
RC-TI-8/6	45	22,5	8/6	14	10	14	50
RC-TI-8	45	22,5	8/6	12	10	14	50
RC-TI-10	51	25,5	10/8	16	11	16	25
RC-TI-12	60	30	12/10	18	14	18	20
RC-TI-15	68	34	15/12,5	22	17	22	10

CROSS CONNECTOR



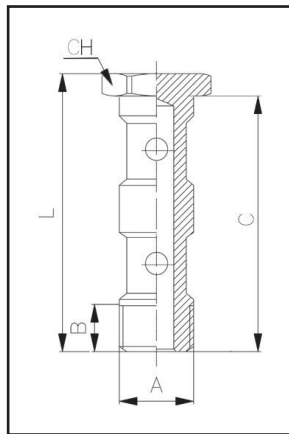
TYPE	L	ØD	CH 1	CH 2	q.ty
RC-C-5	43	5/3	8	8	20
RC-C-6	45	6/4	12	8	20
RC-C-8	45	8/6	14	10	20
RC-C-10	51	10/8	16	11	10

SINGLE BANJO STEM



TYPE	L	A	B	C	CH	q.ty
RC-VBS-M5	18	M5	6	14,5	8	50
RC-VBS-M6	18,5	M6	6	14,5	8	50
RC-VBS-01	27	G1/8	8	23	14	50
RC-VBS-02	29,5	G1/4	11	25	17	50

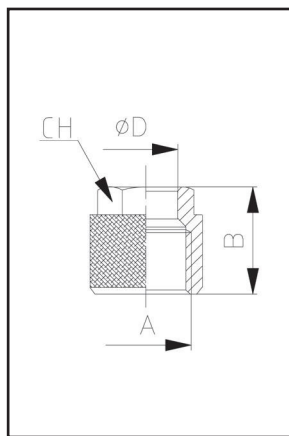
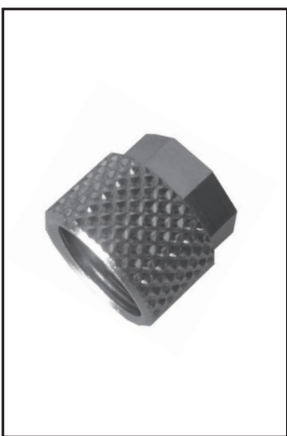
DOUBLE BANJO STEM



TYPE	L	A	B	C	CH	q.ty
RC-VBD-01	43	G1/8	8	39	14	50
RC-VBD-02	45,5	G1/4	11	41	17	50

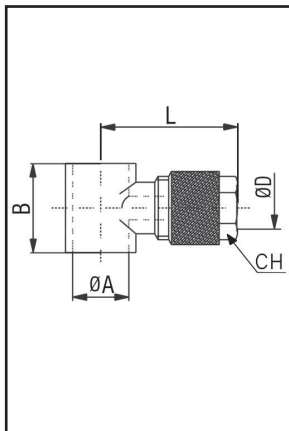
5

LOCKING NUT



TYPE	A	B	D	CH	q.ty
RC-DS-4/M6	4/2,7	8,1	M6x0,5	8	50
RC-DS-6/M8	6/4	9	M8x0,75	9	50
RC-DS-6/M10	6/4	10,5	M10x1	12	50
RC-DS-8/M12	8/6	10,5	M12x1	14	50
RC-DS-10/M14	10/8	11,5	M14x1	16	25
RC-DS-12/M16	12/10	13	M16x1	18	20
RC-DS-15/M20	15/12,5	15,5	M20x1	22	10

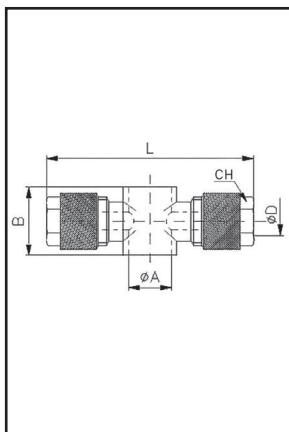
SINGLE BANJO BODY



TYPE	L	ØA	B	ØD	CH	q.ty
RC-CBS-4/M5	15,8	M5	9	4/2,7	8	50
RC-CBS-4/M6	15,8	M6	9	4/2,7	8	50
RC-CBS-4/01	21,3	G1/8	14,5	4/2,7	8	50
RC-CBS-5/M5	17	M5	9	5/3	8	50
RC-CBS-5/01	22,5	G1/8	14,5	5/3	8	50
RC-CBS-6/M5	18	M5	9	6/4	9	50
RC-CBS-6/01	24	G1/8	14,5	6/4	12	50
RC-CBS-6/02	26	G1/4	14,5	6/4	12	50
RC-CBS-8/01	24	G1/8	14,5	8/6	14	50
RC-CBS-8/02	26	G1/4	14,5	8/6	14	50
RC-CBS-10/02	27,5	G1/4	14,5	10/8	16	25

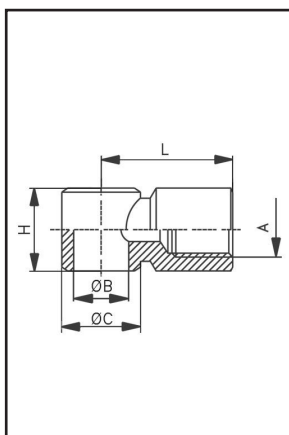
DOUBLE BANJO BODY

5



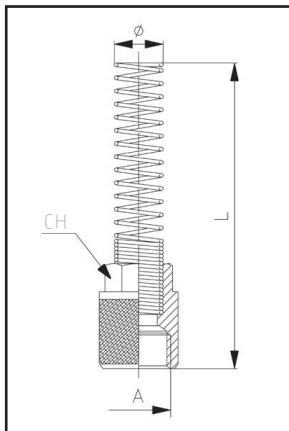
TYPE	L	ØA	B	ØD	CH	q.ty
RC-CBD-4/01	42,6	G1/8	14,5	4/2,7	8	50
RC-CBD-5/01	45	G1/8	14,5	5/3	8	50
RC-CBD-6/01	48	G1/8	14,5	6/4	12	50
RC-CBD-6/02	52	G1/4	14,5	6/4	12	50
RC-CBD-8/01	48	G1/8	14,5	8/6	14	50
RC-CBD-8/02	52	G1/4	14,5	8/6	14	50
RC-CBD-10/02	55	G1/4	14,5	10/8	16	25

FEMALE BANJO BODY



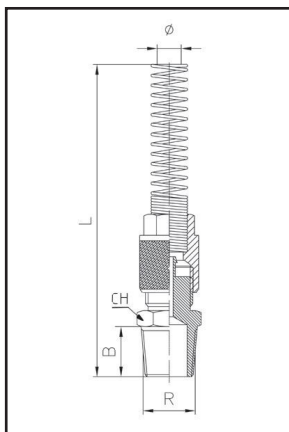
TYPE	L	A	ØB	ØC	H	q.ty
RC-CBF-01	20	G1/8	G1/8	14	14,5	25
RC-CBF-02	24,5	G1/4	G1/4	18	17,5	25
RC-CBF-03	29	G3/8	G3/8	21	21	20

QUICK COUPLER WITH SPRING



TYPE	L	A	Ø	CH	q.ty
RC-G-6/M10	95	M10x1	6/4	12	10
RC-G-8/M12	93,5	M12x1	8/6	14	10
RC-G-10/M14	96,5	M14x1	10/8	16	10
RC-G-12/M16	106	M16x1	12/10	18	10

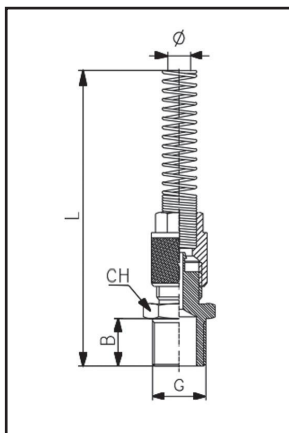
TAPER FIXED STRAIGHT MALE ADAPTER + NUT WITH SPRING



TYPE	L	B	R	Ø	CH	q.ty
RC1-DFM-6/01	109,5	8	1/8	6/4	12	10
RC1-DFM-6/02	113	11	1/4	6/4	14	10
RC1-DFM-8/01	124,5	8	1/8	8/6	12	10
RC1-DFM-8/02	128	11	1/4	8/6	14	10
RC1-DFM-8/03	128,5	11,5	3/8	8/6	17	10
RC1-DFM-8/04	131,5	14	1/2	8/6	22	10
RC1-DFM-10/01	123	8	1/8	10/8	14	10
RC1-DFM-10/02	125	11	1/4	10/8	14	10
RC1-DFM-10/03	125,5	11,5	3/8	10/8	17	10
RC1-DFM-10/04	130	14	1/2	10/8	22	10
RC1-DFM-12/03	134,5	11,5	3/8	12/10	17	10
RC1-DFM-12/04	140	14	1/2	12/10	22	10

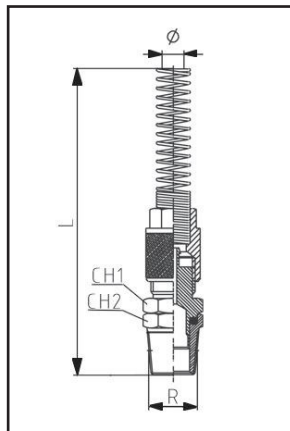
5

PARALLEL FIXED STRAIGHT MALE ADAPTER + NUT WITH SPRING



TYPE	L	B	G	Ø	CH	q.ty
RC-DFM-6/01	111	6	1/8	6/4	13	10
RC-DFM-6/02	111	8	1/4	6/4	16	10
RC-DFM-6/03	112	9	3/8	6/4	19	10
RC-DFM-6/04	113	10	1/2	6/4	24	10
RC-DFM-8/01	110	6	1/8	8/6	14	10
RC-DFM-8/02	111	8	1/4	8/6	16	10
RC-DFM-8/03	112	9	3/8	8/6	19	10
RC-DFM-8/04	113	10	1/2	8/6	24	10
RC-DFM-10/01	116	6	1/8	10/8	14	10
RC-DFM-10/02	117	8	1/4	10/8	16	10
RC-DFM-10/03	118,5	9	3/8	10/8	19	10
RC-DFM-10/04	119	10	1/2	10/8	24	10
RC-DFM-12/03	129	9	3/8	12/10	19	10
RC-DFM-12/04	130	10	1/2	12/10	24	10

TAPER SWIVEL STRAIGHT MALE ADAPTER + NUT WITH SPRING

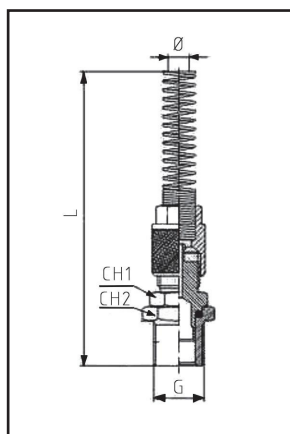


TYPE	L	R	Ø	CH1	CH2	q.ty
RC1-DGM-6/01	116,9	1/8	6/4	15	13	10
RC1-DGM-6/02	118,9	1/4	6/4	15	13	10
RC1-DGM-8/01	122,4	1/8	*8/5	16	16	10
RC1-DGM-8/02	124,4	1/4	*8/5	13	13	10
RC1-DGM-8/01A	122,4	1/8	8/6	16	16	10
RC1-DGM-8/02A	124,4	1/4	8/6	16	16	10
RC1-DGM-10/02	132,4	1/4	*10/6,5	16	16	10
RC1-DGM-10/02A	132,4	1/4	10/8	13	13	10
RC1-DGM-12/03	141,9	3/8	*12/8	16	16	10
RC1-DGM-12/03A	141,9	3/8	12/10	16	16	10

* Specific dimensions for PU tube

PARALLEL SWIVEL STRAIGHT MALE ADAPTER + NUT WITH SPRING

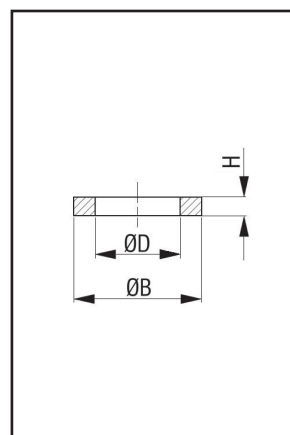
5



TYPE	L	G	Ø	CH1	CH2	q.ty
RC-DGM-6/01	116,9	1/8	6/4	13	13	10
RC-DGM-6/02	118,9	1/4	6/4	13	13	10
RC-DGM-8/01	122,4	1/8	*8/5	16	16	10
RC-DGM-8/02	124,4	1/4	*8/5	13	13	10
RC-DGM-8/01A	122,4	1/8	8/6	16	16	10
RC-DGM-8/02A	124,4	1/4	8/6	16	16	10
RC-DGM-10/02	132,4	1/4	*10/6,5	16	16	10
RC-DGM-10/02A	132,4	1/4	10/8	13	13	10
RC-DGM-12/03	141,9	3/8	*12/8	16	16	10
RC-DGM-12/03A	141,9	3/8	12/10	16	16	10

* Specific dimensions for PU tube

WASHER



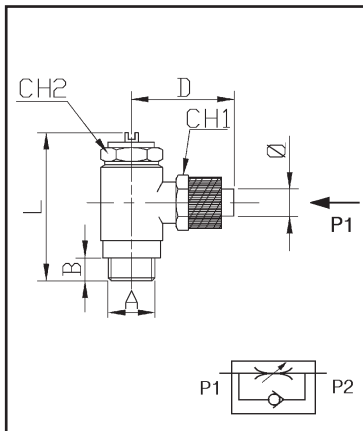
TYPE	ØB	ØD	H	-	q.ty
RO-RD-M5	7,7	5,3	1	M5	100
RO-RD-01	13	10,2	1,5	G1/8	100
RO-RD-02	17,9	13,4	2	G1/4	100
RO-RD-03	21,8	17,1	2	G3/8	100
RO-RD-04	26,5	21,3	2	G1/2	100
RO-RD-06	32,4	26,7	2	G3/4	100

For banjo stem type RC-VBS, RO-VBS and RO-VBD, order No. 2 spacers type RO-RD, to be fitted as follow: one under the head of the screw, and one under the last banjo.

Spacer for RO-VB and RC-VBD*					
TYPE	ØB	ØD	H	-	q.ty
RO-DIS-01	14	10,2	5	G1/8	50
RO-DIS-02	17,5	13,2	5	G1/4	50

* To be fitted between the two rings.

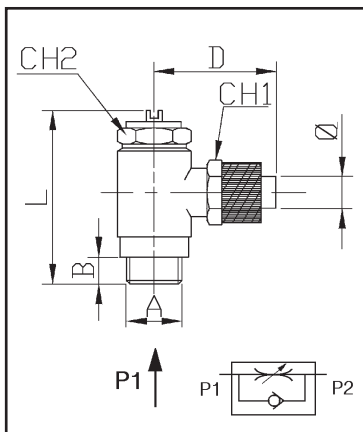
UNIDIRECTIONAL FLOW REGULATOR FOR VALVE (IN)



TYPE	L	A	B	D	Ø	NI/min*	CH1	CH2	q.ty
RC-RV-5/M5	24,5	M5	4	15	5/3	45	8	8	25
RC-RV-5/01	31,5	G1/8	5,5	23	5/3	310	8	14	25
RC-RV-6/M5	24,5	M5	4	15	6/4	45	9	8	25
RC-RV-6/01	31,5	G1/8	5,5	23	6/4	310	10	14	25
RC-RV-6/02	38	G1/4	6	26	6/4	420	10	17	25
RC-RV-8/01	31,5	G1/8	5,5	23	8/6	310	12	14	25
RC-RV-8/02	38	G1/4	6	26	8/6	420	12	17	25

* Nominal flow rate at 6 bar

UNIDIRECTIONAL FLOW REGULATOR FOR CYLINDER (OUT)



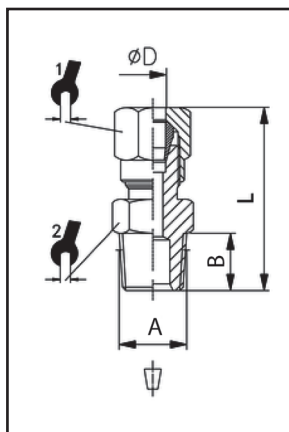
TYPE	L	A	B	D	Ø	NI/min*	CH1	CH2	q.ty
RC-RC-5/M5	24,5	M5	4	15	5/3	45	8	8	25
RC-RC-5/01	34	G1/8	5,5	23	5/3	310	8	14	25
RC-RC-6/M5	24,5	M5	4	15	6/4	45	9	8	25
RC-RC-6/01	31,5	G1/8	5,5	23	6/4	310	10	14	25
RC-RC-6/02	38	G1/4	6	26	6/4	420	10	17	25
RC-RC-8/01	31,5	G1/8	5,5	23	8/6	310	12	14	25
RC-RC-8/02	38	G1/4	6	26	8/6	420	12	17	25
RC-RC-8/03	47	G3/8	7	26	8/6	500	12	20	25

* Nominal flow rate at 6 bar

CARATTERISTICHE TECNICHE

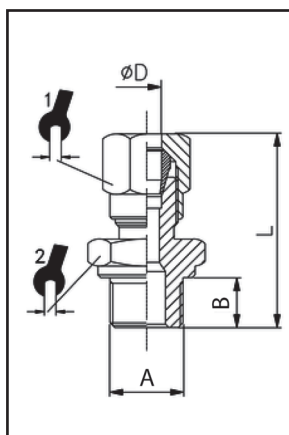
Materiale	Ottone nichelato
Filettatura	Conica e cilindrica
Taglia	1/8 ÷ 1/2
Fluido	Aria
Pressione max	60 bar
Temperatura d'esercizio	Max. 150 °C
Tipi di tubi	Tubi metallici e di plastica con anima di rinforzo

DIRITTO MASCHIO CONICO



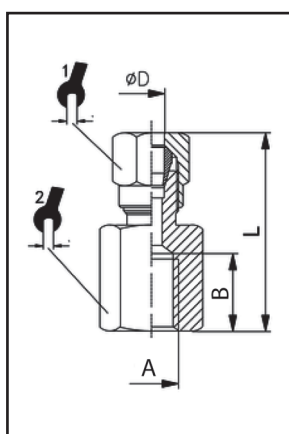
SIGLA	L	A	B	ØD	CH1	CH2	q.tà
RG1-DM-4/01	27	R 1/8	8	4	10	10	100
RG1-DM-6/01	28	R 1/8	8	6	12	12	100
RG1-DM-6/02	32,5	R 1/4	11	6	12	14	100
RG1-DM-8/01	29,5	R 1/8	8	8	14	12	100
RG1-DM-8/02	33	R 1/4	11	8	14	14	100
RG1-DM-8/03	33	R 3/8	11,5	8	14	17	100
RG1-DM-10/02	37,5	R 1/4	11	10	19	17	100
RG1-DM-10/03	38	R 3/8	11,5	10	19	17	100
RG1-DM-10/04	40,5	R 1/2	14	10	19	22	50
RG1-DM-12/03	39	R 3/8	11,5	12	22	19	50
RG1-DM-12/04	41	R 1/2	14	12	22	22	50
RG1-DM-14/04	42,5	R 1/2	14	14	27	22	50
RG1-DM-15/04	42,5	R 1/2	14	15	27	22	50
RG1-DM-16/04	42	R 1/2	14	16	30	24	25
RG1-DM-18/04	43	R 1/2	14	18	32	26	25

DIRITTO MASCHIO CILINDRICO



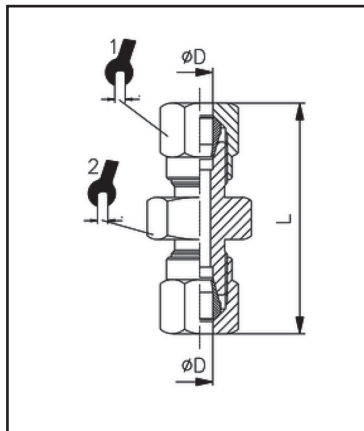
SIGLA	L	A	B	ØD	CH1	CH2	q.tà
RG-DM-4/01	25	G 1/8	6	4	10	14	100
RG-DM-6/01	26	G 1/8	6	6	12	13	100
RG-DM-6/02	29,5	G 1/4	8	6	12	17	100
RG-DM-8/01	27,5	G 1/8	6	8	14	14	100
RG-DM-8/02	30	G 1/4	8	8	14	17	50
RG-DM-10/02	34,5	G 1/4	8	10	19	17	50
RG-DM-10/03	36	G 3/8	9	10	19	19	50
RG-DM-12/03	40	G 3/8	10	12	22	22	50
RG-DM-12/04	42	G 1/2	12	12	22	27	50

DIRITTO FEMMINA CILINDRICO



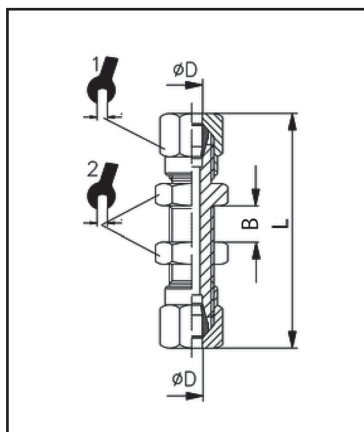
SIGLA	L	A	B	ØD	CH1	CH2	q.tà
RG-DF-4/01	24,5	G 1/8	8	4	10	14	100
RG-DF-6/01	25,5	G 1/8	8,5	6	12	14	100
RG-DF-6/02	30	G 1/4	11	6	12	17	100
RG-DF-8/01	26,5	G 1/8	8	8	14	14	100
RG-DF-8/02	31	G 1/4	11	8	14	17	100
RG-DF-8/03	31	G 3/8	11,5	8	14	20	100
RG-DF-10/02	35,5	G 1/4	11	10	19	17	100
RG-DF-10/03	36,5	G 3/8	11,5	10	19	20	100
RG-DF-12/03	35	G 3/8	11,5	12	22	20	50
RG-DF-12/04	37	G 1/2	15	12	22	24	50
RG-DF-14/04	40	G 1/2	15	14	27	24	50
RG-DF-15/04	40	G 1/2	15	15	27	24	50
RG-DF-16/04	40,5	G 1/2	15	16	30	24	50
RG-DF-18/04	40	G 1/2	15	18	32	26	50

DIRITTO INTERMEDIO



SIGLA	L	ØD	CH1	CH2	q.tà
RG-DI-4	34	4	10	10	100
RG-DI-6	35	6	12	12	100
RG-DI-8	38,5	8	14	14	100
RG-DI-10	47,5	10	19	17	100
RG-DI-12	46	12	22	19	50
RG-DI-14	53	14	27	24	50
RG-DI-15	50	15	27	24	50
RG-DI-16	53,5	16	30	27	25
RG-DI-18	53	18	32	27	25

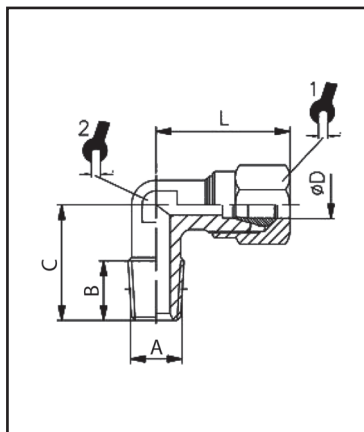
PASSAPARETE



SIGLA	B max	L	ØD	CH1	CH2	q.tà
RG-P-6	15,5	51,5	6	12	14	100
RG-P-8	16,5	55,5	8	14	16	100
RG-P-10	15,5	62,5	10	19	19	50
RG-P-12	16	64,5	12	22	22	50
RG-P-15	18	69,5	15	27	25	50

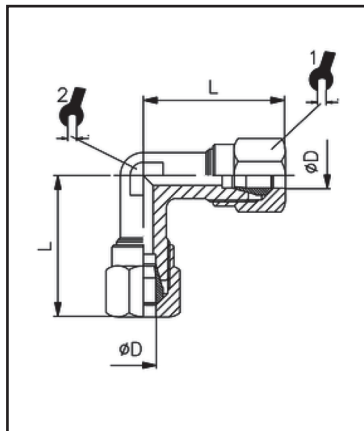
5

GOMITO FISSO MASCHIO CONICO



SIGLA	L	A	B	C	ØD	CH1	CH2	q.tà
RG1-GM-4/01	21	R 1/8	8	16	4	10	9	100
RG1-GM-6/01	22	R 1/8	8	16	6	12	9	100
RG1-GM-6/02	24,5	R 1/4	11	20	6	12	11	100
RG1-GM-8/01	24	R 1/8	8	17	8	14	11	100
RG1-GM-8/02	24	R 1/4	11	20	8	14	11	100
RG1-GM-8/03	27	R 3/8	11,5	24	8	14	13	100
RG1-GM-10/02	32	R 1/4	11	23,5	10	19	13	100
RG1-GM-10/03	32	R 3/8	11,5	24	10	19	13	100
RG1-GM-10/04	34	R 1/2	14	28,5	10	19	15	50
RG1-GM-12/03	34,5	R 3/8	11,5	25,5	12	22	15	50
RG1-GM-12/04	34,5	R 1/2	14	28,5	12	22	15	50
RG1-GM-14/04	38	R 1/2	14	30	14	27	17	50
RG1-GM-15/04	38	R 1/2	14	30	15	27	17	50
RG1-GM-16/04	39,5	R 1/2	14	31,5	16	30	19	25
RG1-GM-18/04	44	R 1/2	14	34	18	32	22	25

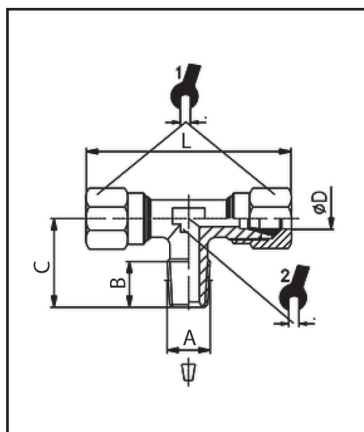
GOMITO INTERMEDIO



SIGLA	L	ØD	CH1	CH2	q.tà
RG-GI-4	21	4	10	9	100
RG-GI-6	23	6	12	9	100
RG-GI-8	24	8	14	11	100
RG-GI-10	32	10	19	13	50
RG-GI-12	34,5	12	22	15	50
RG-GI-14	38	14	27	17	25
RG-GI-15	38	15	27	17	25
RG-GI-16	39,5	16	30	19	25
RG-GI-18	44	18	32	22	25

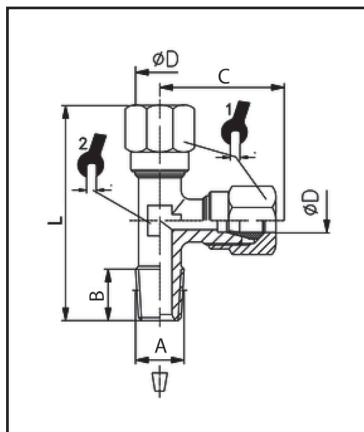
5

T MASCHIO CONICO



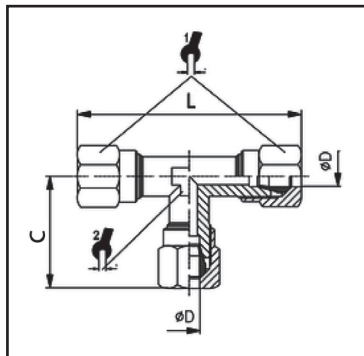
SIGLA	L	A	B	C	ØD	CH1	CH2	q.tà
RG1-TC-4/01	42	R 1/8	8	16	4	10	9	100
RG1-TC-6/01	46	R 1/8	8	16	6	12	9	100
RG1-TC-6/02	48	R 1/4	11	20	6	12	11	100
RG1-TC-8/01	48	R 1/8	8	17	8	14	11	100
RG1-TC-8/02	48	R 1/4	11	20	8	14	11	100
RG1-TC-8/03	54	R 3/8	11,5	24	8	14	13	100
RG1-TC-10/02	64	R 1/4	11	23,5	10	19	13	100
RG1-TC-10/03	64	R 3/8	11,5	24	10	19	13	100
RG1-TC-12/03	69	R 3/8	11,5	25,5	12	22	15	50
RG1-TC-12/04	69	R 1/2	14	28,5	12	22	14	50
RG1-TC-14/04	76	R 1/2	14	30	14	27	17	50
RG1-TC-15/04	76	R 1/2	14	30	15	27	17	50
RG1-TC-16/04	79	R 1/2	14	31,5	16	30	19	50
RG1-TC-18/04	88	R 1/2	14	34	18	32	22	25

T MASCHIO LATERALE CONICO



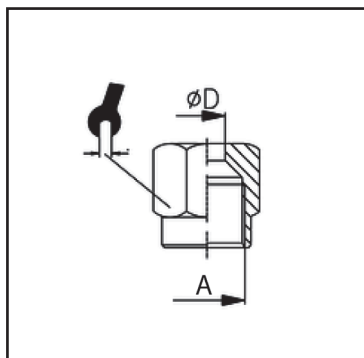
SIGLA	L	A	B	C	ØD	CH1	CH2	q.tà
RG1-TL-4/01	37	R 1/8	8	21	4	10	9	100
RG1-TL-6/01	39	R 1/8	8	23	6	12	9	100
RG1-TL-6/02	44,5	R 1/4	11	24,5	6	12	11	100
RG1-TL-8/01	41	R 1/8	8	24	8	14	11	100
RG1-TL-8/02	44	R 1/4	11	24	8	14	12	100
RG1-TL-8/03	51	R 3/8	11,5	27	8	14	13	100
RG1-TL-10/02	55,5	R 1/4	11	32	10	19	13	100
RG1-TL-10/03	56	R 3/8	11,5	32	10	19	13	100
RG1-TL-12/03	60	R 3/8	11,5	34,5	12	22	15	50
RG1-TL-12/04	63	R 1/2	14	34,5	12	22	15	50
RG1-TL-14/04	68	R 1/2	14	38	14	27	17	50
RG1-TL-15/04	68	R 1/2	14	38	15	27	17	50
RG1-TL-16/04	71	R 1/2	14	39,5	16	30	19	50
RG1-TL-18/04	78	R 1/2	14	44	18	32	22	25

T INTERMEDIO



SIGLA	L	C	ØD	CH1	CH2	q.tà
RG-TI-4	42	23	4	10	9	50
RG-TI-6	46	23	6	12	9	50
RG-TI-8	48	24	8	14	11	50
RG-TI-10	64	32	10	19	13	50
RG-TI-12	69	34,5	12	22	15	50
RG-TI-14	76	38	14	27	17	50
RG-TI-15	76	38	15	27	17	50
RG-TI-16	79	39,5	16	30	19	25
RG-TI-18	88	44	18	32	22	25

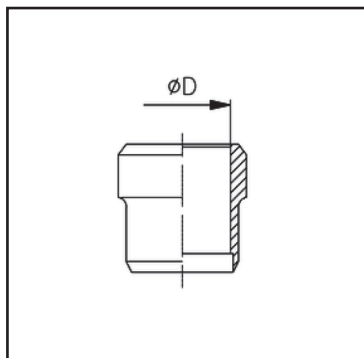
DADO



SIGLA	A	ØD	CH1	q.tà
RG-D-4	M8X1	4	10	100
RG-D-6	M10X1	6	12	100
RG-D-8	M12X1	8	14	100
RG-D-10	M16X1,5	10	19	100
RG-D-12	M18X1,5	12	22	100
RG-D-14	M22X1,5	14	27	100
RG-D-15	M22X1,5	15	27	100
RG-D-16	M24X1,5	16	30	50
RG-D-18	M26X1,5	18	32	50

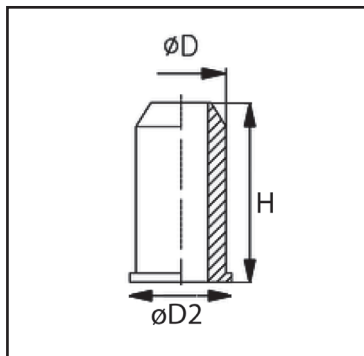
5

OGIVA



SIGLA	ØD	q.tà
RG-O-4	4	100
RG-O-6	6	100
RG-O-8	8	100
RG-O-10	10	100
RG-O-12	12	100
RG-O-14	14	100
RG-O-15	15	100
RG-O-16	16	50
RG-O-18	18	50

ANIMA RINFORZO

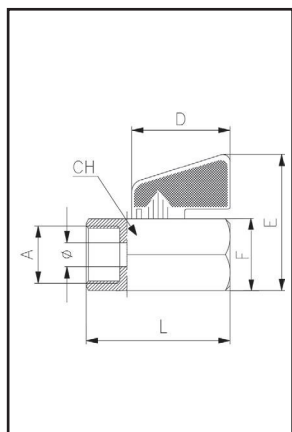


SIGLA	ØD1	ØD2	H	q.tà
RG-AR-2	2	3,5	8	100
RG-AR-4	4	5	10	100
RG-AR-6	6	8	15	100
RG-AR-8	8	10	15	100
RG-AR-10	10	12	15	100
RG-AR-12	12	14,3	15	100
RG-AR-14	14	17,3	18	100
RG-AR-18	18	21,3	20	100

TECHNICAL DATA

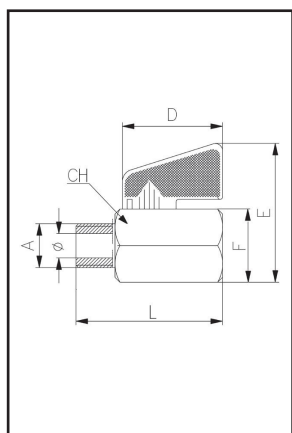
Body	Nickel-plated brass
Ball	Hard chromium-plated brass
Lever	Polyamide
Seals	Polytetrafluoroethylene
O-Ring	NBR rubber
Surface treatment	Chromium- plating
Thread	Parallel (BSPP) and taper (BSPT): 1/8 ÷ 3/4
Max. pressure	20 bar
Working temperature	-18 ÷ +80 °C
Acuation	90°
Nominal orifice	5 ÷ 14 mm
Flow direction	Bidirectional

5 FEMALE/FEMALE WITH HEXAGONAL BODY



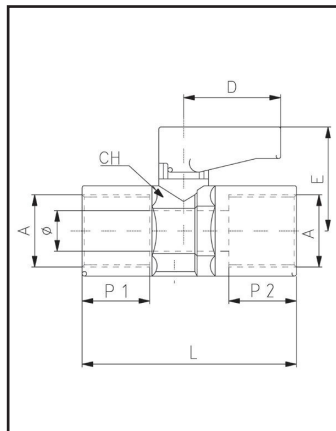
TYPE	L	A	D	E	F	Ø	CH	q.ty
VSR-FF-01	40	G1/8	30	38	21	6	21	20
VSR-FF-02	40	G1/4	22	38	21	8	21	20
VSR-FF-03	40	G3/8	22	38	21	8	21	20
VSR-FF-04	46	G1/2	22	42	25	10	25	20
VSR-FF-06	52	G3/4	22	48	30	14	30	15

MALE/FEMALE WITH HEXAGONAL BODY



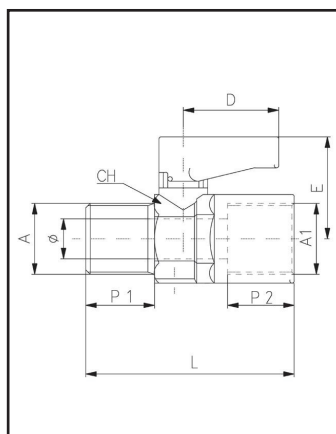
TYPE	L	A	D	E	F	Ø	CH	q.ty
VSR-MF-01	40	G1/8	30	38	21	6	21	20
VSR-MF-02	39	G1/4	22	38	21	8	21	20
VSR-MF-03	40	G3/8	22	38	21	8	21	20
VSR-MF-04	48	G1/2	22	42	25	10	25	20
VSR-MF-06	54	G3/4	22	48	30	14	30	15

FEMALE/FEMALE



TYPE	L	A	P1	P2	D	E	Ø	CH	q.ty
VS-FF-01	36,5	G1/8	8	8	19	21,5	5,5	14	20
VS-FF-02	43	G1/4	11	11	19	21,5	5,5	14	20
VS-FF-03	48	G3/8	11,5	16	18	22,5	7	18	20
VS-FF-04	59	G1/2	16	23	25	32	10	22	20

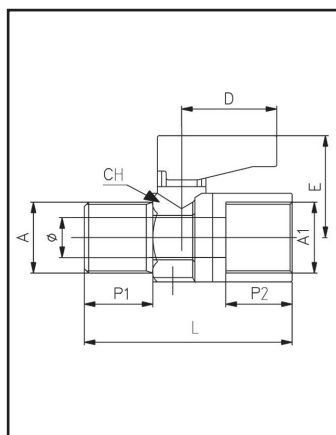
MALE/FEMALE WITH TAPER THREAD



TYPE	L	A	A1	D	E	P1	P2	Ø	CH	q.ty
VS1-MF-01	35,5	R1/8	G1/8	19	21,5	8	8	5,5	14	20
VS1-MF-02	40,5	R1/4	G1/4	19	21,5	11	11	5,5	14	20
VS1-MF-03	48	R3/8	G3/8	19	22,5	13	16	8	18	20
VS1-MF-04	58	R1/2	G1/2	26	32	17	23	10	22	20

5

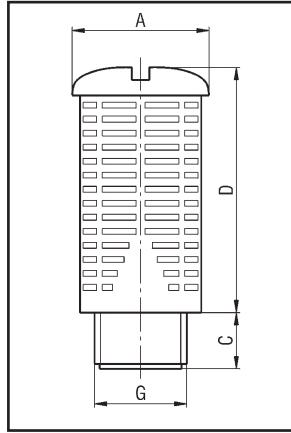
MALE/FEMALE WITH PARALLEL THREAD



TYPE	L	A	A1	D	E	P1	P2	Ø	CH	q.ty
VS-MF-01	34,5	G1/8	G1/8	19	21,5	7	8	5,5	14	20
VS-MF-02	35,5	G1/4	G1/4	19	21,5	8	8	5,5	14	20
VS-MF-03	37,5	G3/8	G3/8	19	21,5	8	11	5,5	14	20
VS-MF-04	38,5	G1/2	G1/2	19	21,5	8	11	5,5	14	20

Silencers

PARALLEL SILENCER

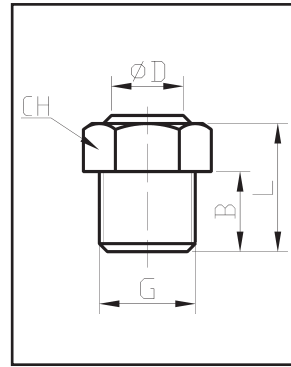


TYPE	A	C	D	G	q.ty
ES8/N	15,5	6	26,5	1/8	100
ES4/N	19,5	8	35	1/4	100
ES3/N	24,5	11	47	3/8	50
ES2/N	24,5	11	47	1/2	50
ES15/N	48	18	97	3/4	10
ES1/N	48	18	97	1	10

Body: Acetal resin
Filter: Granulate ABS

FLAT SILENCER

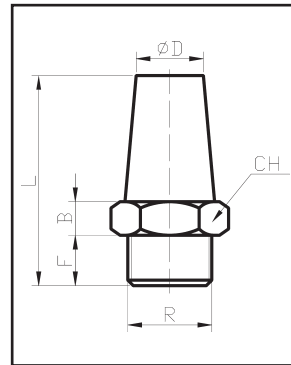
5



TYPE	L	B	ØD	G	CH	q.ty
SP-M5	9,5	5	6,4	M5	9	50
SP-01	11	6	10	G1/8	12	50
SP-02	14,5	8,5	13	G1/4	16	50
SP-03	17	10	16	G3/8	19	50
SP-04	19	11	17	G1/2	22	20

Body: Brass
Filter: Spherical sintered bronze 100 µm

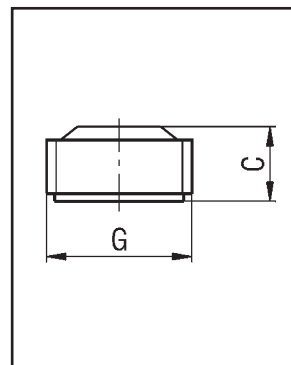
CONICAL SILENCER



TYPE	L	B	ØD	F	R	CH	q.ty
SC-M5	20	3,5	5,5	5	M5	10	100
SC-01	24	4	8	6	G1/8	13	50
SC-02	33	4	11	8	G1/4	17	50
SC-03	44	5	14	10	G3/8	22	50
SC-04	49	6,5	18	10	G1/2	24	50
SC-06	57	7,5	21	11	G3/4	30	50
SC-08	72	8,5	27	15,5	G1	36	50

Body: Brass
Filter: Spherical sintered bronze 36 µm

HIDDEN SILENCER



TYPE	C	G	q.ty
SS-01	4	G1/8	100
SS-02	6	G1/4	50
SS-03	8	G3/8	50
SS-04	9	G1/2	25
SS-06	8	G3/4	10
SS-08	10	G1	5

Body: Brass
Filter: Spherical sintered bronze 50 µm